

EMBARGOED UNTIL 11.30 A.M. 23 JUNE 1993

**LABOUR FORCE STATUS AND EDUCATIONAL ATTAINMENT
AUSTRALIA
FEBRUARY 1993**

IAN CASTLES
Australian Statistician

AUSTRALIAN BUREAU OF STATISTICS

CATALOGUE NO. 6235.0

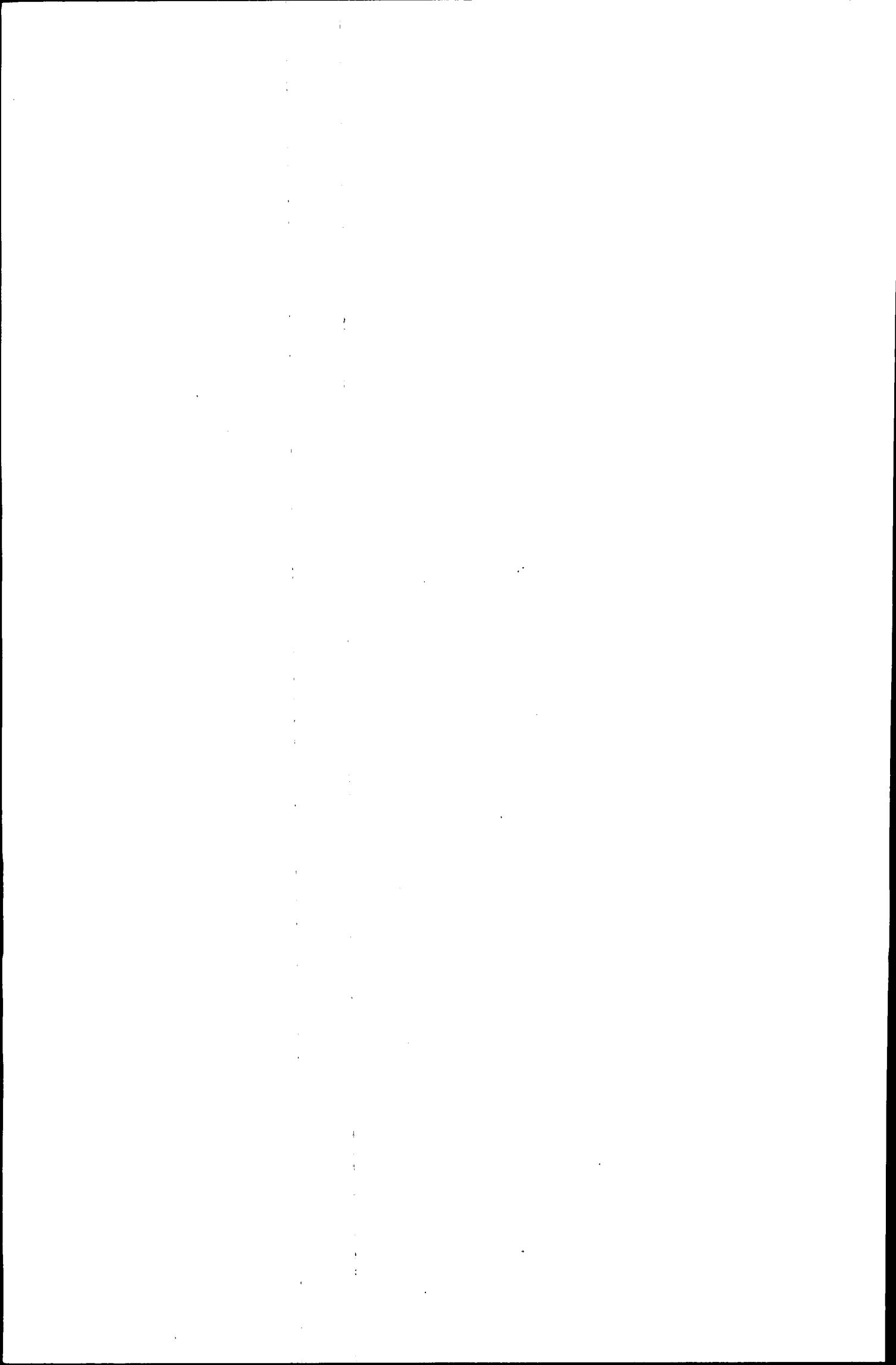
© Commonwealth of Australia 1993

CONTENTS

<i>Table</i>	<i>Page</i>
.. Summary of Findings	1
Persons aged 15 to 69 in February 1993—	
Educational attainment and sex—	
1. Labour force status	3
2. Age	4
3. Family status	5
Persons aged 15 to 69, February 1988 to February 1993—	
Educational attainment—	
4. Labour force status	6
5. Age	7
6. Persons aged 15 to 69 in February 1993 with a post-school qualification— Age, labour force status and summary of demographic and educational characteristics	8
Employed persons aged 15 to 69 in February 1993—	
7. Educational attainment and summary of demographic and employment characteristics	9
8. Educational attainment, occupation and birthplace	10
9. Unemployed persons aged 15 to 69 in February 1993— Educational attainment and summary of demographic characteristics and duration of unemployment	11
10. Unemployed persons aged 15 to 69, February 1988 to February 1993— Educational attainment, unemployment rate, average and median duration of unemployment	12
Persons aged 19 and 22, February 1985, February 1989 and February 1993—	
Educational attainment and sex—	
11. Labour force status	13
12. Distribution	14
13. Main survey population totals in February 1993— States and Territories of usual residence	15
.. Explanatory Notes	16
.. Technical Note	18
.. Glossary	20
.. Data items and how to order special tables from this survey	21

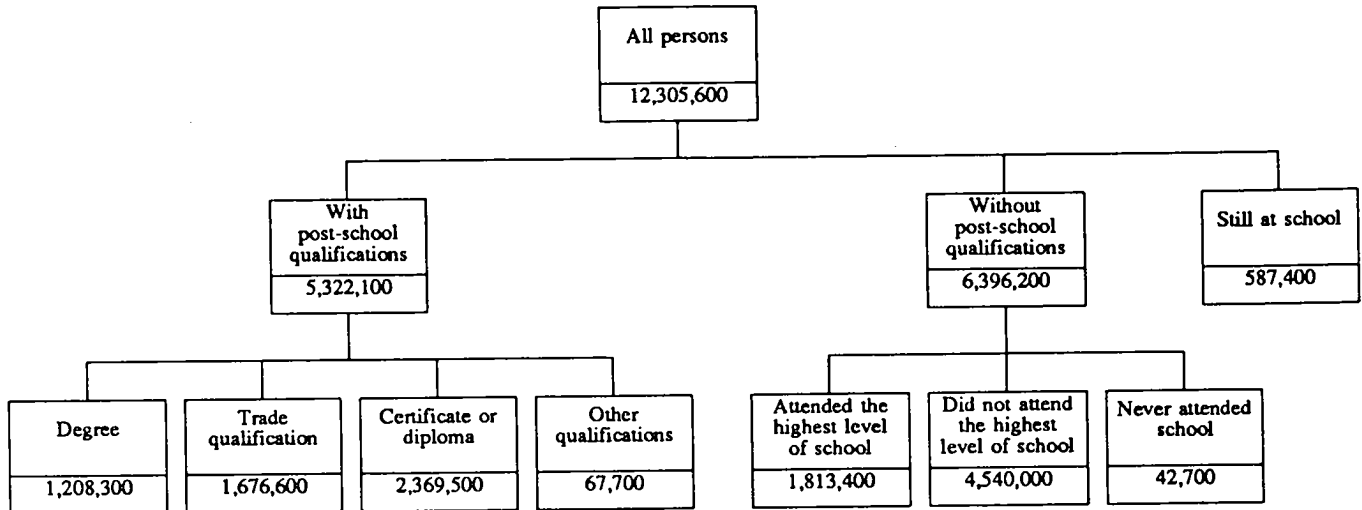
INQUIRIES

- *for further information about statistics in this publication and the availability of related unpublished statistics, contact Ms Nicolle Witmann on Canberra (06) 252 6578 or any ABS State office.*
 - *for information about other ABS statistics and services please refer to the back page of this publication.*
-



SUMMARY OF FINDINGS

DIAGRAM 1. ALL PERSONS AGED 15 TO 69: EDUCATIONAL ATTAINMENT, FEBRUARY 1993
(Source: Table 1)

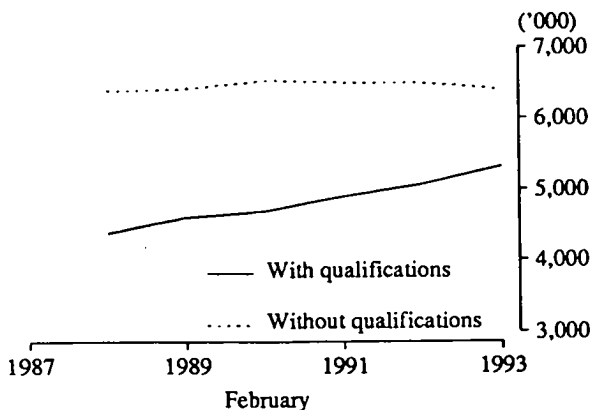
**Overview**

In February 1993 the estimated civilian population aged 15 to 69 was 12,305,600 persons, an increase of 150,400 since the previous year.

Persons without post-school qualifications (6,396,200) comprise 52% of this population and 4,540,000 (71%) of these had not attended the highest level of school available. A further 1,813,400 (28%) had attended the highest level of schooling while the remaining 42,700 (1%) had never attended school.

Persons with post-school qualifications numbered 5,322,100 and comprised 2,369,500 (45%) with a certificate or diploma, 1,676,600 (31%) with a trade qualification, 1,208,300 (23%) with a degree or higher and 67,700 (1%) with other qualifications.

DIAGRAM 2. PERSONS WITH OR WITHOUT POST-SCHOOL QUALIFICATIONS, FEBRUARY 1988 TO FEBRUARY 1993



Source: Table 4

It was estimated that 587,400 persons were attending school.

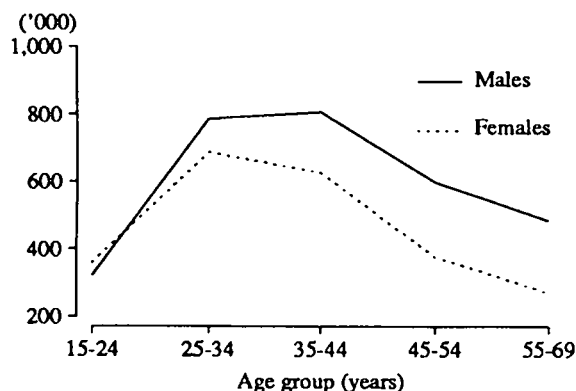
Since February 1988.....

- the number of persons aged 15 to 69 has increased by 8 per cent (936,600)
- the number of persons with post-school qualifications has increased by 21 per cent (935,400), the majority of this increase (670,800) among 35 to 69 year olds
- the number of persons without post-school qualifications who had attended the highest level of school available has increased by 30 per cent (417,000) while the number who did not attend the highest level of school available has decreased by 9 per cent (422,900)
- there has been a decrease of 9 per cent (307,100) in the number of persons without qualifications who had left school at age 15 or under
- employed persons with post-school qualifications increased by 18 per cent (589,400) while those without post-school qualifications decreased by 6 per cent (227,700)
- the number of unemployed persons with degrees or higher rose by 140 per cent (38,100), those with trade qualifications rose by 119 per cent (73,300), certificates or diplomas were up 107 per cent (96,200) and there was an increase of 139 per cent (4,600) in the number of unemployed persons with other post-school qualifications.

Since February 1992.....

- an extra 5 per cent of persons (245,600) were recorded as having post-school qualifications
- persons with degrees increased by 68,800 (6%), trade qualified persons increased by 56,400 (3%) and another 96,700 persons (4%) had attained certificates or diplomas
- the age group 45 to 54 recorded the largest increase in the number of persons with post-school qualifications, rising by 87,000 (10%)
- the number of employed persons with post-school qualifications increased by 108,700 (3%) while the number without qualifications decreased by 137,500 (4%)
- the number of unemployed persons increased by 54,400 - of this increase 49,500 were among persons with post-school qualifications
- the number of persons not in the labour force with post-school qualifications increased by 87,300 (10%) to 989,100.

DIAGRAM 3. NUMBER OF MALES AND FEMALES WITH POST-SCHOOL QUALIFICATIONS BY AGE GROUP, FEBRUARY 1993



Source: Table 2

Participation in the labour force

Persons with post-school qualifications had a labour force participation rate of 81.4 per cent compared to 63.5 per cent for those without post-school qualifications.

Of persons without post-school qualifications, those who had attended the highest level of school available had a participation rate of 74.4 per cent and persons who had not attended at the highest level had a participation rate of 59.6 per cent.

Persons who had never attended school (42,700) had a participation rate of 26.3 per cent.

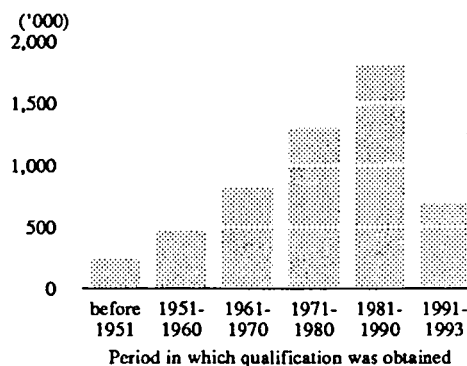
Persons not in the labour force

Since 1988 the number of persons in this category with a post-school qualification increased by 133,700 (16%).

In February 1993, 27 per cent (989,100) of persons not in the labour force had post-school qualifications. Females accounted for 630,500 (64%) of these with the majority (460,000) holding certificates or diplomas.

Among the 2,332,700 persons not in the labour force without post-school qualifications, only 465,100 (20%) had attended the highest level of secondary school available.

DIAGRAM 4. NUMBER OF PERSONS WITH POST-SCHOOL QUALIFICATIONS BY YEAR OBTAINED QUALIFICATIONS, FEBRUARY 1993



Source: Table 6

Educational characteristics of family members

In February 1993.....

- 53 per cent (2,128,100) of persons identified as husbands or wives with dependent children had a post-school qualification
- 36 per cent (1,441,100) of husbands or wives with dependent children had not attended the highest level of school available
- 49 per cent (220,000) of sole parents had not attended the highest level of school available
- 39 per cent (176,200) of sole parents had attained post-school qualifications.

Occupation

Just over half of the 850,800 employed managers and administrators had post-school qualifications compared to 90 per cent of the 1,000,800 professionals, 78 per cent of the 453,700 para-professionals and 69 per cent of the 1,122,900 tradespersons. Labourers and related workers had the lowest proportion of persons with post-school qualifications with 28 per cent of the 1,119,000 employed.

Industry

The industry recording the highest proportion of persons with post-school qualifications was community services with 72 per cent (1,008,800). The lowest level was in the agriculture, forestry, fishing and hunting industries with 33 per cent (402,100).

Of the 992,300 employed persons with degrees, 42 per cent were in the community services industry.

Three industries accounted for almost two-thirds of persons with trade qualifications. These were manufacturing with 280,800 (23%), wholesale and retail trade with 262,300 (21%) and construction with 241,600 (19%).

TABLE 1. PERSONS AGED 15 TO 69: EDUCATIONAL ATTAINMENT AND LABOUR FORCE STATUS, FEBRUARY 1993

Educational attainment	Employed			Unem- ployed	Labour force	Not in labour force	Total	Unemp- loyment rate	Partici- pation rate
	Full-time	Part-time	Total						
				—'000—			—per cent—		
MALES									
With post-school qualifications	2,266.3	143.4	2,409.7	231.2	2,641.0	358.5	2,999.5	8.8	88.0
Degree	560.4	39.7	600.1	33.5	633.6	52.8	686.4	5.3	92.3
Trade qualification	1,117.8	57.0	1,174.8	123.3	1,298.1	207.1	1,505.2	9.5	86.2
Certificate or diploma	560.2	44.1	604.3	69.1	673.4	94.7	768.1	10.3	87.7
Other	27.9	* 2.6	30.5	5.3	35.8	4.0	39.8	14.8	90.0
Without post-school qualifications	1,695.6	197.7	1,893.3	377.9	2,271.2	619.6	2,890.8	16.6	78.6
Attended highest level of secondary school available	517.1	98.3	615.4	115.4	730.9	148.6	879.5	15.8	83.1
Did not attend highest level of secondary school available	1,172.6	99.4	1,271.9	260.5	1,532.4	458.7	1,991.1	17.0	77.0
Left at age —									
18 and over	25.0	* 2.7	27.7	8.3	36.0	9.7	45.7	23.0	78.8
16 or 17	456.5	33.5	490.1	102.6	592.7	73.0	665.7	17.3	89.0
14 or 15	602.1	54.1	656.2	126.9	783.2	285.6	1,068.7	16.2	73.3
13 and under	88.9	9.0	97.9	22.6	120.5	90.4	211.0	18.7	57.1
Never attended school	5.9	* 0.0	5.9	* 2.0	7.9	12.3	20.2	* 24.9	39.1
Still at school	* 0.6	50.8	51.4	22.0	73.4	221.5	294.9	30.0	24.9
Total	3,962.5	391.9	4,354.4	631.1	4,985.5	1,199.7	6,185.2	12.7	80.6
FEMALES									
With post-school qualifications	995.7	533.5	1,529.2	162.9	1,692.1	630.5	2,322.6	9.6	72.9
Degree	286.9	105.3	392.3	31.8	424.1	97.8	521.8	7.5	81.3
Trade qualification	58.7	36.2	94.9	11.8	106.7	64.7	171.4	11.1	62.2
Certificate or diploma	641.2	383.6	1,024.8	116.6	1,141.4	460.0	1,601.5	10.2	71.3
Other	8.9	8.4	17.3	* 2.6	19.9	8.0	27.9	* 13.3	71.2
Without post-school qualifications	879.1	689.7	1,568.7	223.6	1,792.3	1,713.1	3,505.4	12.5	51.1
Attended highest level of secondary school available	322.0	213.3	535.4	82.1	617.4	316.5	933.9	13.3	66.1
Did not attend highest level of secondary school available	556.1	475.7	1,031.8	139.8	1,171.6	1,377.4	2,549.0	11.9	46.0
Left at age —									
18 and over	9.9	5.1	15.0	* 3.2	18.1	15.0	33.1	* 17.5	54.8
16 or 17	255.9	184.8	440.6	58.4	499.0	332.6	831.6	11.7	60.0
14 or 15	263.5	264.0	527.6	68.5	596.1	847.1	1,443.1	11.5	41.3
13 and under	26.9	21.8	48.7	9.7	58.3	182.8	241.1	16.6	24.2
Never attended school	* 0.9	* 0.7	* 1.6	* 1.8	* 3.3	19.2	22.5	* 52.9	* 14.8
Still at school	* 0.1	81.8	81.9	22.9	104.8	187.7	292.4	21.8	35.8
Total	1,874.8	1,305.0	3,179.8	409.3	3,589.1	2,531.3	6,120.4	11.4	58.6
PERSONS									
With post-school qualifications	3,262.0	676.9	3,938.9	394.1	4,333.0	989.1	5,322.1	9.1	81.4
Degree	847.3	145.0	992.3	65.3	1,057.7	150.6	1,208.3	6.2	87.5
Trade qualification	1,176.4	93.2	1,269.7	135.1	1,404.8	271.8	1,676.6	9.6	83.8
Certificate or diploma	1,201.4	427.7	1,629.1	185.7	1,814.8	554.7	2,369.5	10.2	76.6
Other	36.8	11.0	47.8	7.9	55.7	12.0	67.7	14.2	82.3
Without post-school qualifications	2,574.7	887.4	3,462.0	601.5	4,063.5	2,332.7	6,396.2	14.8	63.5
Attended highest level of secondary school available	839.1	311.7	1,150.8	197.5	1,348.3	465.1	1,813.4	14.6	74.4
Did not attend highest level of secondary school available	1,728.7	575.0	2,303.8	400.2	2,704.0	1,836.1	4,540.0	14.8	59.6
Left at age —									
18 and over	34.9	7.8	42.7	11.4	54.1	24.7	78.8	21.1	68.7
16 or 17	712.4	218.3	930.7	161.1	1,091.8	405.5	1,497.3	14.8	72.9
14 or 15	865.7	318.1	1,183.8	195.4	1,379.2	1,132.6	2,511.9	14.2	54.9
13 and under	115.8	30.8	146.6	32.3	178.9	273.2	452.1	18.0	39.6
Never attended school	6.8	* 0.7	7.5	* 3.7	11.2	31.5	42.7	* 33.2	26.3
Still at school	* 0.6	132.6	133.2	44.9	178.1	409.2	587.4	25.2	30.3
Total	5,837.3	1,696.9	7,534.2	1,040.5	8,574.7	3,731.0	12,305.6	12.1	69.7

TABLE 2. PERSONS AGED 15 TO 69: EDUCATIONAL ATTAINMENT AND AGE, FEBRUARY 1993
(^{'000})

Educational attainment	Age						Total
	15 - 19	20 - 24	25 - 34	35 - 44	45 - 54	55 - 69	
MALES							
With post-school qualifications	27.5	293.8	787.7	806.8	598.4	485.2	2,999.5
Degree	* 0.7	60.5	188.4	220.3	136.1	80.5	686.4
Trade qualification	10.0	154.2	398.7	358.6	300.4	283.2	1,505.2
Certificate or diploma	14.9	75.8	190.0	217.5	154.6	115.3	768.1
Other	* 1.9	* 3.4	10.7	10.3	7.3	6.2	39.8
Without post-school qualifications	332.9	422.8	605.2	520.8	444.5	564.6	2,890.8
Attended highest level of secondary school available	185.9	216.0	196.9	139.7	75.8	65.2	879.5
Did not attend highest level of secondary school available	147.0	206.4	407.1	378.3	363.4	489.0	1,991.1
Left at age —							
18 and over	4.0	11.4	13.0	8.8	5.4	* 3.1	45.7
16 or 17	89.9	116.8	198.6	135.2	77.2	48.1	665.7
14 or 15	52.8	75.9	181.9	211.3	223.1	323.6	1,068.7
13 and under	* 0.3	* 2.3	13.7	22.9	57.7	114.1	211.0
Never attended school	* 0.0	* 0.4	* 1.2	* 2.8	5.3	10.5	20.2
Still at school	293.9	* 1.0	294.9
Total	654.3	717.7	1,392.9	1,327.6	1,042.9	1,049.8	6,185.2
FEMALES							
With post-school qualifications	55.4	305.4	686.8	626.8	378.5	269.7	2,322.6
Degree	* 0.0	72.5	181.1	158.8	78.3	31.1	521.8
Trade qualification	* 2.4	23.8	46.7	41.4	26.5	30.5	171.4
Certificate or diploma	52.3	204.2	450.8	420.3	269.4	204.4	1,601.5
Other	* 0.7	4.8	8.2	6.4	4.3	* 3.6	27.9
Without post-school qualifications	281.5	399.5	709.8	702.9	615.2	796.5	3,505.4
Attended highest level of secondary school available	197.4	205.0	214.0	143.1	87.4	87.0	933.9
Did not attend highest level of secondary school available	84.1	193.4	493.9	555.9	525.0	696.8	2,549.0
Left at age —							
18 and over	* 2.7	7.1	9.5	7.3	4.4	* 2.1	33.1
16 or 17	44.4	116.6	251.7	213.6	114.2	91.0	831.6
14 or 15	36.4	66.8	218.3	302.2	342.0	477.4	1,443.1
13 and under	* 0.6	* 2.8	14.4	32.7	64.3	126.3	241.1
Never attended school	* 0.0	* 1.1	* 1.9	* 3.9	* 2.8	12.7	22.5
Still at school	291.3	* 1.1	292.4
Total	628.3	706.0	1,396.6	1,329.7	993.7	1,066.2	6,120.4
PERSONS							
With post-school qualifications	82.9	599.2	1,474.5	1,433.6	977.0	754.9	5,322.1
Degree	* 0.7	133.0	369.5	379.2	214.3	111.6	1,208.3
Trade qualification	12.4	178.0	445.4	400.0	327.0	313.7	1,676.6
Certificate or diploma	67.1	280.0	640.8	637.8	424.1	319.7	2,369.5
Other	* 2.7	8.2	18.9	16.6	11.6	9.8	67.7
Without post-school qualifications	614.4	822.3	1,315.0	1,223.7	1,059.7	1,361.1	6,396.2
Attended highest level of secondary school available	383.3	421.1	410.9	282.8	163.2	152.1	1,813.4
Did not attend highest level of secondary school available	231.0	399.7	901.0	934.1	888.4	1,185.8	4,540.0
Left at age —							
18 and over	6.7	18.6	22.5	16.1	9.8	5.2	78.8
16 or 17	134.3	233.4	450.3	348.8	191.4	139.1	1,497.3
14 or 15	89.2	142.7	400.2	513.6	565.2	801.0	2,511.9
13 and under	* 0.9	5.1	28.0	55.7	122.0	240.4	452.1
Never attended school	* 0.0	* 1.5	* 3.1	6.8	8.2	23.2	42.7
Still at school	585.2	* 2.1	587.4
Total	1,282.5	1,423.7	2,789.5	2,657.3	2,036.7	2,116.0	12,305.6

TABLE 3. PERSONS AGED 15 TO 69: FAMILY STATUS AND EDUCATIONAL ATTAINMENT, FEBRUARY 1993
(*000)

Family status	Educational attainment							Total(b)	Total(c)
	With post-school qualifications				Without post-school qualifications				
	Degree	Trade qualification	Certificate or diploma	Total(a)	Attended highest level of secondary school available	Did not attend highest level of secondary school available	Total(b)		
MALES									
Member of a family	556.8	1,262.8	630.7	2,483.8	720.4	1,641.9	2,379.4	5,139.1	
Husband	479.5	1,074.2	528.9	2,109.9	344.8	1,219.0	1,578.2	3,688.2	
With dependents present	318.4	588.7	315.3	1,238.4	210.5	606.5	823.5	2,061.9	
Without dependents present	161.0	485.4	213.6	871.6	134.3	612.4	754.7	1,626.3	
Sole parent	5.9	12.2	6.7	25.1	8.1	22.6	31.1	56.4	
Other family head	5.7	14.3	6.0	26.9	6.1	25.7	31.8	58.7	
Full-time student aged 15-24(d)	4.1	* 1.8	7.0	13.1	122.3	9.8	132.2	419.9	
Other child of married couple or family head	57.3	145.5	76.9	284.2	224.9	331.3	557.7	843.0	
Other relative of married couple or family head	4.4	14.9	5.1	24.6	14.2	33.4	48.3	72.9	
Not a member of a family	109.8	202.6	116.9	434.6	131.0	284.3	418.3	855.5	
Living alone	56.4	109.7	56.9	226.3	51.8	158.7	212.1	438.4	
Not living alone	53.4	92.9	60.0	208.3	79.2	125.6	206.1	417.0	
Family status not determined	19.8	39.7	20.5	81.1	28.0	64.9	93.1	190.6	
Total	686.4	1,505.2	768.1	2,999.5	879.5	1,991.1	2,890.8	6,185.2	
FEMALES									
Member of a family	405.8	145.6	1,341.7	1,916.0	787.0	2,209.7	3,016.0	5,209.1	
Wife	309.5	112.9	1,031.5	1,471.8	432.3	1,755.3	2,198.9	3,671.0	
With dependents present	195.8	58.6	625.3	889.8	248.3	834.6	1,086.7	1,976.5	
Without dependents present	113.7	54.3	406.2	582.0	184.0	920.7	1,112.2	1,694.5	
Sole parent	28.8	12.0	109.1	151.1	41.2	197.4	239.4	390.9	
Other family head	5.0	4.0	28.8	37.8	14.0	87.4	102.9	140.9	
Full-time student aged 15-24(d)	11.7	* 0.8	9.8	22.4	135.5	6.5	142.0	439.7	
Other child of married couple or family head	48.0	12.0	147.1	210.4	153.4	131.8	288.7	499.8	
Other relative of married couple or family head	* 2.7	* 3.9	15.4	22.6	10.6	31.3	44.0	66.8	
Not a member of a family	98.7	18.0	202.3	323.1	113.9	269.8	386.0	713.7	
Living alone	46.1	10.0	115.6	173.8	47.6	194.3	243.5	417.7	
Not living alone	52.5	8.1	86.6	149.3	66.4	75.5	142.5	296.0	
Family status not determined	17.3	7.8	57.5	83.5	33.0	69.4	103.4	197.6	
Total	521.8	171.4	1,601.5	2,322.6	933.9	2,549.0	3,505.4	6,120.4	
PERSONS									
Member of a family	962.6	1,408.4	1,972.4	4,399.8	1,507.4	3,851.7	5,395.3	10,348.2	
Husband or wife	789.0	1,187.1	1,560.4	3,581.7	777.1	2,974.3	3,777.2	7,359.2	
With dependents present	514.2	647.3	940.5	2,128.1	458.7	1,441.1	1,910.2	4,038.4	
Without dependents present	274.8	539.8	619.9	1,453.6	318.3	1,533.2	1,866.9	3,320.8	
Sole parent	34.7	24.2	115.9	176.2	49.3	220.0	270.5	447.4	
Other family head	10.8	18.2	34.8	64.7	20.1	113.2	134.7	199.6	
Full-time student aged 15-24(d)	15.8	* 2.6	16.9	35.5	257.8	16.3	274.1	859.6	
Other child of married couple or family head	105.3	157.5	224.0	494.6	378.3	463.1	846.5	1,342.8	
Other relative of married couple or family head	7.1	18.7	20.5	47.2	24.8	64.8	92.3	139.7	
Not a member of a family	208.5	220.7	319.2	757.7	245.0	554.1	804.3	1,569.2	
Living alone	102.5	119.7	172.5	400.1	99.4	353.0	455.6	856.1	
Not living alone	106.0	101.0	146.7	357.6	145.6	201.1	348.7	713.0	
Family status not determined	37.2	47.5	78.0	164.5	61.0	134.3	196.5	388.3	
Total	1,208.3	1,676.6	2,369.5	5,322.1	1,813.4	4,540.0	6,396.2	12,305.6	

(a) Includes persons with other post-school qualifications. (b) Includes persons who never attended school. (c) Includes persons still at school. (d) Excludes persons aged 21 to 24 attending school.

TABLE 4. PERSONS AGED 15 TO 69: LABOUR FORCE STATUS AND EDUCATIONAL ATTAINMENT,
FEBRUARY 1988 TO FEBRUARY 1993
(*000)

	1988	1989	1990	1991	1992	1993
<i>Employed</i>	7,159.5	7,478.8	7,724.0	7,651.8	7,571.1	7,534.2
With post-school qualifications	3,349.5	3,526.0	3,668.9	3,752.2	3,830.2	3,938.9
Degree	734.5	770.4	834.4	875.0	950.5	992.3
Trade qualification	1,227.1	1,248.3	1,255.9	1,242.2	1,240.8	1,269.7
Certificate or diploma	1,368.7	1,491.1	1,532.3	1,604.1	1,610.2	1,629.1
Other	19.2	16.3	46.2	31.0	28.7	47.8
Without post-school qualifications(a)	3,689.7	3,808.2	3,911.0	3,758.9	3,599.5	3,462.0
Attended highest level of secondary school available	r 953.8	r 996.5	r 1,087.9	r 1,111.4	r 1,116.0	1,150.8
Did not attend highest level of secondary school available	2,725.4	2,802.4	2,813.9	2,638.8	2,471.9	2,303.8
left at age —						
16 and over	1,097.4	1,186.2	1,202.0	1,147.3	1,048.8	973.4
15 and under	1,627.9	1,616.2	1,611.9	1,491.6	1,423.1	1,330.4
Still at school	120.3	144.6	144.2	140.7	141.5	133.2
<i>Unemployed</i>	633.0	588.0	581.8	800.7	986.1	1,040.5
With post-school qualifications	181.8	165.9	168.3	269.3	344.6	394.1
Degree	27.2	32.3	37.5	44.2	59.4	65.3
Trade qualification	61.8	46.6	46.3	88.2	118.6	135.1
Certificate or diploma	89.5	83.6	80.5	131.2	161.9	185.7
Other	*3.3	*3.4	4.0	5.7	4.6	7.9
Without post-school qualifications(a)	410.9	384.8	377.4	486.4	596.6	601.5
Attended highest level of secondary school available	r 99.5	r 99.6	r 99.0	r 134.6	r 185.1	97.5
Did not attend highest level of secondary school available	308.2	283.8	277.2	350.8	409.1	400.2
left at age —						
16 and over	130.1	118.3	118.7	153.4	164.5	172.5
15 and under	178.1	165.5	158.5	197.4	244.6	227.7
Still at school	40.3	37.3	36.1	45.1	44.9	44.9
<i>Labour force</i>	7,792.5	8,066.9	8,305.8	8,452.5	8,557.2	8,574.7
With post-school qualifications	3,531.3	3,691.9	3,837.1	4,021.5	4,174.8	4,333.0
Degree	761.7	802.7	871.9	919.1	1,010.0	1,057.7
Trade qualification	1,288.8	1,294.8	1,302.2	1,330.3	1,359.4	1,404.8
Certificate or diploma	1,458.3	1,574.6	1,612.8	1,735.3	1,772.1	1,814.8
Other	22.5	19.7	50.2	36.7	33.3	55.7
Without post-school qualifications(a)	4,100.5	4,193.1	4,288.4	4,245.3	4,196.0	4,063.5
Attended highest level of secondary school available	r 1,053.3	r 1,096.1	r 1,186.9	r 1,246.0	r 1,301.1	1,348.3
Did not attend highest level of secondary school available	3,033.6	3,086.2	3,091.1	2,989.6	2,881.0	2,704.0
left at age —						
16 and over	1,227.6	1,304.5	1,320.7	1,300.6	1,213.3	1,145.9
15 and under	1,806.0	1,781.7	1,770.4	1,689.0	1,667.7	1,558.1
Still at school	160.6	181.9	180.3	185.8	186.4	178.1
<i>Not in labour force</i>	3,576.5	3,530.5	3,492.5	3,533.4	3,598.0	3,731.0
With post-school qualifications	855.4	914.4	861.9	874.7	901.8	989.1
Degree	106.6	125.9	115.8	128.1	129.5	150.6
Trade qualification	262.9	269.0	255.3	241.4	260.8	271.8
Certificate or diploma	472.5	509.1	476.9	494.0	500.7	554.7
Other	13.3	10.4	13.9	11.2	10.8	12.0
Without post-school qualifications(a)	2,295.4	2,230.0	2,245.6	2,246.7	2,289.2	2,332.7
Attended highest level of secondary school available	r 343.1	r 339.4	r 377.5	r 389.0	r 431.6	465.1
Did not attend highest level of secondary school available	1,929.3	1,864.6	1,837.6	1,829.9	1,830.4	1,836.1
left at age —						
16 and over	444.1	440.3	434.5	432.5	439.2	430.2
15 and under	1,485.2	1,424.2	1,403.2	1,397.4	1,391.1	1,405.9
Still at school	425.7	386.2	385.0	412.0	407.1	409.2
<i>All persons</i>	11,369.0	11,597.4	11,798.4	11,985.9	12,155.2	12,305.6
With post-school qualifications	4,386.7	4,606.2	4,699.0	4,896.1	5,076.5	5,322.1
Degree	868.4	928.6	987.7	1,047.2	1,139.5	1,208.3
Trade qualification	1,551.8	1,563.8	1,557.5	1,571.7	1,620.2	1,676.6
Certificate or diploma	1,930.8	2,083.7	2,089.7	2,229.2	2,272.8	2,369.5
Other	35.8	30.1	64.1	47.9	44.0	67.7
Without post-school qualifications(a)	6,396.0	6,423.0	6,534.0	6,491.9	6,485.2	6,396.2
Attended highest level of secondary school available	r 1,396.4	r 1,435.5	r 1,564.4	r 1,635.0	r 1,732.6	1,813.4
Did not attend highest level of secondary school available	4,962.9	4,950.7	4,928.7	4,819.6	4,711.3	4,540.0
left at age —						
16 and over	1,671.7	1,744.8	1,755.1	1,733.2	1,652.5	1,576.1
15 and under	3,291.2	3,205.9	3,173.6	3,086.4	3,058.8	2,963.9
Still at school	586.3	568.1	565.3	597.8	593.4	587.4

(a) Includes persons who never attended school.

TABLE 5. PERSONS AGED 15 TO 69: AGE AND EDUCATIONAL ATTAINMENT,
FEBRUARY 1988 TO FEBRUARY 1993
(*000)

	1988	1989	1990	1991	1992	1993
Aged 15 - 24	2,659.8	2,677.9	2,696.8	2,709.5	2,712.1	2,706.2
With post-school qualifications	560.2	555.8	576.8	611.2	630.9	682.1
Degree	78.6	86.7	102.4	112.2	115.2	133.7
Trade qualification	187.0	165.9	165.7	170.0	171.8	190.5
Certificate or diploma	287.1	298.5	299.1	320.9	334.9	347.1
Other	7.6	4.6	9.7	8.1	8.9	10.9
Without post-school qualifications(a)	1,513.3	1,554.0	1,554.7	1,500.4	1,487.8	1,436.7
Attended highest level of secondary school available	r 605.5	r 644.4	r 706.0	r 726.5	r 784.6	804.4
Did not attend highest level of secondary school available	907.2	908.8	846.9	773.0	703.2	630.8
Still at school	586.3	568.1	565.3	597.8	593.4	587.4
Aged 25 - 34	2,643.5	2,697.3	2,730.5	2,758.0	2,779.5	2,789.5
With post-school qualifications	1,331.9	1,346.5	1,357.1	1,412.2	1,442.7	1,474.5
Degree	335.4	325.9	325.3	347.5	354.7	369.5
Trade qualification	416.4	422.8	423.2	429.5	440.8	445.4
Certificate or diploma	570.2	589.3	593.0	620.7	638.2	640.8
Other	9.9	8.5	15.6	14.6	9.0	18.9
Without post-school qualifications(a)	1,311.6	1,350.8	1,373.5	1,345.8	1,336.8	1,315.0
Attended highest level of secondary school available	r 339.9	r 335.2	r 366.3	r 355.8	r 371.3	410.9
Did not attend highest level of secondary school available	969.4	1,011.2	1,001.7	986.5	962.1	901.0
Aged 35 - 44	2,387.9	2,457.7	2,527.0	2,591.5	2,621.8	2,657.3
With post-school qualifications	1,145.9	1,229.6	1,280.1	1,337.6	1,374.9	1,433.6
Degree	259.6	295.2	309.1	328.0	379.5	379.2
Trade qualification	370.4	375.5	387.5	388.6	388.1	400.0
Certificate or diploma	507.6	551.6	569.9	612.6	595.6	637.8
Other	8.2	7.4	13.7	8.5	11.7	16.6
Without post-school qualifications(a)	1,242.0	1,228.0	1,246.9	1,253.8	1,246.9	1,223.7
Attended highest level of secondary school available	r 218.3	r 224.0	r 237.9	r 262.6	r 285.6	282.8
Did not attend highest level of secondary school available	1,019.7	1,001.9	1,004.6	983.9	954.8	934.1
Aged 45 - 54	1,636.9	1,695.0	1,764.5	1,838.2	1,937.7	2,036.7
With post-school qualifications	675.4	759.3	773.0	840.1	890.0	977.0
Degree	111.7	130.5	148.3	154.8	185.9	214.3
Trade qualification	264.3	289.9	280.7	295.7	307.4	327.0
Certificate or diploma	294.7	334.9	331.0	381.7	388.5	424.1
Other	4.7	4.0	12.9	7.8	8.1	11.6
Without post-school qualifications(a)	961.5	935.7	991.5	998.1	1,047.7	1,059.7
Attended highest level of secondary school available	r 104.0	r 108.1	r 129.1	r 148.8	r 151.8	163.2
Did not attend highest level of secondary school available	847.4	818.9	855.6	842.5	884.8	888.4
Aged 55 - 69	2,040.9	2,069.6	2,079.6	2,088.8	2,104.1	2,116.0
With post-school qualifications	673.4	715.0	712.1	695.0	738.1	754.9
Degree	83.1	90.3	102.6	104.8	104.1	111.6
Trade qualification	313.6	309.7	300.6	288.0	312.2	313.7
Certificate or diploma	271.3	309.4	296.8	293.4	315.5	319.7
Other	5.4	5.6	12.2	8.9	6.3	9.8
Without post-school qualifications(a)	1,367.5	1,354.5	1,367.5	1,393.8	1,366.0	1,361.1
Attended highest level of secondary school available	r 128.8	r 123.8	r 125.1	r 141.3	r 139.3	152.1
Did not attend highest level of secondary school available	1,219.2	1,209.9	1,220.0	1,233.7	1,206.4	1,185.8
All persons	11,369.0	11,597.4	11,798.4	11,985.9	12,155.2	12,305.6
With post-school qualifications	4,386.7	4,606.2	4,699.0	4,896.1	5,076.5	5,322.1
Degree	868.4	928.6	987.7	1,047.2	1,139.5	1,208.3
Trade qualification	1,551.8	1,563.8	1,557.5	1,571.7	1,620.2	1,676.6
Certificate or diploma	1,930.8	2,083.7	2,089.7	2,229.2	2,272.8	2,369.5
Other	35.8	30.1	64.1	47.9	44.0	67.7
Without post-school qualifications(a)	6,396.0	6,423.0	6,534.0	6,491.9	6,485.2	6,396.2
Attended highest level of secondary school available	r 1,396.4	r 1,435.5	r 1,564.4	r 1,635.0	r 1,732.6	1,813.4
Did not attend highest level of secondary school available	4,962.9	4,950.7	4,928.7	4,819.6	4,711.3	4,540.0
Still at school	586.3	568.1	565.3	597.8	593.4	587.4

(a) Includes persons who never attended school.

TABLE 6. PERSONS AGED 15 TO 69 WITH A POST-SCHOOL QUALIFICATION: AGE, LABOUR FORCE STATUS AND SUMMARY OF DEMOGRAPHIC AND EDUCATIONAL CHARACTERISTICS, FEBRUARY 1993 ('000)

	Age					Employed	Unemployed	Not in labour force	Total
	15 - 24	25 - 34	35 - 44	45 - 54	55 - 69				
<i>Marital status —</i>									
Married	139.7	970.8	1,157.9	816.5	592.7	2,731.7	206.1	739.9	3,677.7
Not-married	542.4	503.7	275.7	160.4	162.2	1,207.2	188.0	249.2	1,644.4
<i>Birthplace and period of arrival —</i>									
Born in Australia	588.7	1,089.8	971.2	625.3	499.7	2,873.3	254.2	647.2	3,774.7
Born outside Australia	93.4	384.7	462.4	351.6	255.2	1,065.7	139.9	341.8	1,547.4
Arrived before 1961	..	* 3.1	72.4	85.9	118.7	179.0	15.5	85.6	280.0
Arrived 1961 - 1970	4.5	108.2	90.0	106.6	80.0	270.6	31.9	86.9	389.4
Arrived 1971 - 1980	39.8	64.9	110.0	86.5	31.6	252.3	27.0	53.6	332.8
Arrived 1981 - 1990	36.3	152.1	164.5	65.4	20.7	314.2	44.3	80.5	439.0
Arrived 1991 - 1993	12.7	56.3	25.6	7.2	4.2	49.6	21.3	35.2	106.1
<i>Country obtained qualification —</i>									
In Australia	662.6	1,298.0	1,182.1	760.2	567.1	3,387.6	320.6	761.9	4,470.0
Outside Australia	19.5	176.5	251.5	216.8	187.8	551.3	73.6	227.2	852.1
Main English-speaking countries(a)	11.5	77.9	119.2	114.5	97.5	302.8	26.3	91.5	420.6
Other countries	8.0	98.6	132.3	102.3	90.3	248.5	47.3	135.7	431.5
<i>Year obtained qualification —</i>									
Before 1951	240.0	42.9	* 3.9	193.3	240.0
1951-1960	143.7	325.5	265.1	25.9	178.2	469.2
1961-1970	224.7	503.3	89.1	631.4	48.2	137.6	817.2
1971-1980	..	271.8	806.8	161.8	61.6	1,029.5	72.3	200.2	1,302.0
1981-1990	300.6	1,045.8	303.6	127.8	32.5	1,459.1	137.1	214.2	1,810.4
1991-1993	381.5	156.8	98.4	40.3	6.1	510.8	106.7	65.6	683.2
<i>Main field of study —</i>									
<i>Degree —</i>									
Administration (b)	133.7	369.5	379.2	214.3	111.6	992.3	65.3	150.6	1,208.3
Law	35.0	81.9	63.7	34.1	15.8	195.2	11.0	24.2	230.5
Education	* 2.0	14.5	16.5	11.2	5.8	44.6	* 2.6	* 2.9	50.0
Medicine	13.7	55.6	76.7	43.6	16.7	171.1	9.3	25.9	206.3
Science, math, computing	7.7	31.6	28.5	17.0	14.9	88.2	* 2.2	9.4	99.8
Veterinary, agric., forestry	27.5	63.5	60.3	33.0	11.8	164.6	10.4	21.1	196.1
Engineering	* 1.8	5.1	9.2	5.5	* 1.9	21.3	* 0.5	* 1.7	23.5
Architecture	7.9	35.3	35.8	21.1	19.0	94.1	10.9	14.0	119.1
Social sciences	* 1.2	6.3	8.4	4.7	* 1.4	19.8	* 1.1	* 1.1	21.9
Other fields of degree	31.6	68.2	69.8	40.4	23.4	171.8	15.5	46.2	233.5
Trade qualification —	5.3	7.5	10.0	* 3.7	* 1.1	21.7	* 1.9	* 3.9	27.5
Metal	190.5	445.4	400.0	327.0	313.7	1,269.7	135.1	271.8	1,676.6
Service	26.2	83.0	77.7	72.1	75.0	252.8	29.8	51.4	334.0
Building	18.6	33.6	28.2	18.9	11.7	70.7	7.8	32.4	110.9
Electrical	34.1	90.9	88.0	69.4	75.8	273.6	32.7	52.0	358.2
Food and drink	21.1	54.1	57.9	41.2	39.6	171.2	9.7	33.0	213.9
Wood and furniture	22.6	36.5	22.5	20.8	20.0	87.3	13.7	21.4	122.3
Printing and allied	6.6	21.3	12.8	7.8	12.5	47.9	4.6	8.6	61.0
Automotive, mechanical	5.7	11.5	13.9	12.3	8.2	40.6	* 3.5	7.5	51.6
Footwear, clothing, textiles	39.9	79.7	61.3	54.5	31.1	219.9	22.0	24.8	266.7
Other fields of trade	* 1.6	6.6	10.2	9.5	21.5	23.2	* 2.0	24.1	49.4
Certificate or diploma —	14.0	28.2	27.4	20.5	18.4	82.6	9.4	16.6	108.5
Business administration (c)	347.1	640.8	637.8	424.1	319.7	1,629.1	185.7	554.7	2,369.5
Secretarial (d)	52.7	77.6	100.3	78.4	48.2	275.9	25.0	56.3	357.2
Education, teacher training	111.6	170.8	143.6	90.5	64.3	358.4	43.7	178.7	580.8
Nursing	15.1	52.8	86.5	57.1	31.8	170.5	16.8	56.1	243.4
Other health, para-medical	28.9	97.5	94.9	66.8	59.6	236.1	14.9	96.8	347.8
Science (e)	15.0	26.4	30.3	15.8	13.6	72.4	7.4	21.2	101.0
Engineering, architecture	23.5	51.5	43.5	25.5	16.7	125.9	14.0	20.8	160.7
Transport, communication	9.3	35.2	39.7	29.1	28.3	109.9	8.2	23.4	141.6
Social studies, arts, crafts	7.4	17.2	17.2	10.2	12.8	46.6	5.0	13.3	64.9
Other fields of certificate/diploma	17.4	36.2	32.8	20.8	20.8	73.6	14.7	39.7	128.1
Other post-school qualifications	66.3	75.5	49.1	29.8	23.5	159.7	36.1	48.3	244.1
Persons	10.9	18.9	16.6	11.6	9.8	47.8	7.9	12.0	67.7
Males	682.1	1,474.5	1,433.6	977.0	754.9	3,938.9	394.1	989.1	5,322.1
Females	321.3	787.7	806.8	598.4	485.2	2,409.7	231.2	358.5	2,999.5
	360.8	686.8	626.8	378.5	269.7	1,529.2	162.9	630.5	2,322.6

(a) Comprises United Kingdom, Ireland, Canada, South Africa, U.S.A. and New Zealand. (b) Includes Business Studies and Commerce. (c) Includes Commerce. (d) Includes Typing and Data Processing. (e) Includes Computing and Agriculture.

TABLE 7. EMPLOYED PERSONS AGED 15 TO 69: EDUCATIONAL ATTAINMENT AND SUMMARY OF DEMOGRAPHIC AND EMPLOYMENT CHARACTERISTICS, FEBRUARY 1993 ('000)

	<i>Educational attainment</i>							
	<i>With post-school qualifications</i>				<i>Without post-school qualifications</i>			
	<i>Degree</i>	<i>Trade qualification</i>	<i>Certificate or diploma</i>	<i>Total(a)</i>	<i>Attended highest level of secondary school available</i>	<i>Did not attend highest level of secondary school available</i>	<i>Total(b)</i>	<i>Total(c)</i>
<i>Age —</i>								
15 - 24	104.3	159.1	251.0	521.3	483.5	379.0	862.5	1,517.1
25 - 34	309.4	382.4	448.0	1,153.7	296.0	523.6	819.9	1,973.6
35 - 44	326.0	336.7	489.1	1,166.7	206.2	602.0	810.4	1,977.1
45 - 54	187.9	269.8	329.5	795.6	120.0	539.7	662.2	1,457.8
55 - 69	64.9	121.7	111.4	301.6	45.0	259.5	307.1	608.6
<i>Marital status —</i>								
Married	665.0	931.8	1,100.4	2,731.7	519.9	1,582.7	2,109.2	4,841.1
Not-married	327.4	337.8	528.7	1,207.2	630.9	721.0	1,352.8	2,693.1
<i>Birthplace and period of arrival —</i>								
Born in Australia	675.7	935.7	1,223.7	2,873.3	876.4	1,773.7	2,652.8	5,646.4
Born outside Australia	316.6	333.9	405.4	1,065.7	274.3	530.1	809.3	1,887.8
Arrived before 1961	41.3	68.7	67.5	179.0	29.8	129.0	160.4	339.4
Arrived 1961 - 1970	55.5	106.4	105.9	270.6	58.5	172.0	232.2	502.9
Arrived 1971 - 1980	74.6	76.6	98.6	252.3	82.8	121.0	204.2	460.9
Arrived 1981 - 1990	120.6	74.0	116.7	314.2	93.5	98.5	193.1	514.6
Arrived 1991 - 1993	24.6	8.2	16.6	49.6	9.8	9.5	19.3	70.1
<i>Status of worker —</i>								
Wage and salary earners	874.4	967.9	1,403.0	3,284.2	1,009.0	1,857.6	2,872.9	6,280.0
Other	117.9	301.8	226.1	654.7	141.8	446.1	589.1	1,254.2
<i>Full-time/part-time status —</i>								
Full-time workers	847.3	1,176.4	1,201.4	3,262.0	839.1	1,728.7	2,574.7	5,837.3
Part-time workers	145.0	93.2	427.7	676.9	311.7	575.0	887.4	1,696.9
<i>Occupation in current job —</i>								
Managers and administrators	129.3	130.2	176.6	443.5	119.8	285.7	407.1	850.8
Professionals	621.3	33.4	244.1	901.3	59.6	39.3	98.9	1,000.8
Para-professionals	42.2	65.7	242.6	354.6	46.4	51.7	98.1	453.7
Tradespersons	14.4	675.4	81.1	773.5	89.6	258.3	348.5	1,122.9
Clerks	87.2	39.4	413.9	547.0	284.4	423.7	708.3	1,258.3
Salespersons and personal service workers	62.9	83.4	283.9	439.2	293.2	378.9	672.3	1,195.1
Plant and machine operators, and drivers	8.7	106.3	52.4	171.9	67.8	290.2	360.2	533.7
Labourers and related workers	26.4	135.8	134.5	307.8	190.0	575.8	768.6	1,119.0
<i>Industry of current job —</i>								
Agriculture, forestry, fishing and hunting	16.3	34.0	78.8	134.0	58.3	202.2	261.5	402.1
Mining	10.0	25.1	13.8	49.7	6.8	25.8	32.8	82.6
Manufacturing	76.4	284.0	172.6	540.5	149.8	402.5	554.3	1,100.7
Electricity, gas and water	14.2	34.1	20.3	68.7	6.0	23.4	29.4	98.2
Construction	21.7	258.6	47.1	329.6	51.3	160.9	212.4	542.6
Wholesale and retail trade	89.3	273.2	255.2	624.2	309.3	560.5	871.0	1,591.7
Transport and storage	19.7	73.7	62.1	157.6	53.7	161.7	216.1	373.9
Communication	9.0	21.5	22.5	53.6	19.1	37.8	56.9	110.7
Finance, property and business services	188.6	50.9	231.7	476.8	171.9	189.1	361.3	841.3
Public administration and defence	85.3	43.6	91.0	221.9	67.0	94.2	161.7	384.2
Community services	419.2	72.5	510.0	1,008.8	136.0	256.7	393.9	1,404.9
Recreation, personal and other services	42.7	98.5	124.2	273.4	121.6	188.9	310.8	601.3
<i>Persons</i>	992.3	1,269.7	1,629.1	3,938.9	1,150.8	2,303.8	3,462.0	7,534.2
Males	600.1	1,174.8	604.3	2,409.7	615.4	1,271.9	1,893.3	4,354.4
Females	392.3	94.9	1,024.8	1,529.2	535.4	1,031.8	1,568.7	3,179.8

(a) Includes persons with other post-school qualifications. (b) Includes persons who never attended school. (c) Includes persons still at school.

TABLE 8. EMPLOYED PERSONS AGED 15 TO 69: EDUCATIONAL ATTAINMENT, OCCUPATION AND BIRTHPLACE, FEBRUARY 1993 ('000)

Educational attainment	Occupation in current job								All occupations
	Managers and administrators	Professionals	Para-professionals	Tradespersons	Clerks	Salespersons and personal service workers	Plant and machine operators and drivers	Labourers and related workers	
BORN IN AUSTRALIA									
With post-school qualifications	325.3	660.6	258.7	568.2	403.8	323.5	121.6	211.5	2,873.3
Degree	87.2	443.1	29.0	5.6	52.4	41.7	* 3.1	13.6	675.7
Trade qualification	97.1	22.9	48.4	503.6	28.8	60.3	78.7	95.8	935.7
Certificate or diploma	134.5	192.4	177.3	57.0	317.5	214.4	36.4	94.1	1,223.7
Other	6.5	* 2.1	* 3.9	* 1.9	5.2	7.1	* 3.4	7.9	38.0
Without post-school qualifications(a)	317.7	75.4	80.4	254.2	575.4	556.0	248.5	545.1	2,652.8
Attended highest level of secondary school available	88.8	44.4	37.4	66.7	225.4	242.2	40.5	130.9	876.4
Did not attend highest level of secondary school available	228.5	31.0	43.0	187.0	349.8	313.5	207.6	413.4	1,773.7
Still at school	* 0.2	* 0.5	* 1.0	* 0.9	* 2.7	76.2	* 1.2	37.6	120.3
Total	643.2	736.5	340.1	823.4	981.9	955.7	371.3	794.3	5,646.4
BORN OVERSEAS IN A MAIN ENGLISH-SPEAKING COUNTRY(b)									
With post-school qualifications	59.4	119.0	57.4	95.1	68.2	60.1	20.1	38.9	518.2
Degree	20.3	81.9	5.3	* 1.9	12.1	8.7	* 0.7	* 1.2	132.2
Trade qualification	16.2	6.5	12.3	83.3	5.5	15.4	13.2	21.2	173.6
Certificate or diploma	21.9	30.3	39.8	9.9	49.6	35.1	5.9	15.5	208.1
Other	* 0.9	* 0.3	* 0.0	* 0.0	* 1.0	* 0.8	* 0.3	* 1.0	4.4
Without post-school qualifications(a)	32.9	14.9	8.7	32.0	72.4	56.8	29.7	73.4	320.8
Attended highest level of secondary school available	12.4	9.7	* 3.7	7.0	27.2	22.2	5.8	17.5	105.4
Did not attend highest level of secondary school available	20.5	5.2	5.0	25.0	45.2	34.5	23.6	55.9	215.0
Still at school	* 0.0	* 0.0	* 0.0	* 0.0	* 0.0	4.0	* 0.0	* 2.2	6.2
Total	92.3	133.9	66.1	127.1	140.6	120.8	49.8	114.5	845.2
BORN OVERSEAS IN OTHER THAN MAIN ENGLISH-SPEAKING COUNTRIES									
With post-school qualifications	58.8	121.8	38.5	110.2	75.0	55.7	30.2	57.3	547.5
Degree	21.8	96.3	7.9	6.9	22.8	12.5	4.9	11.5	184.4
Trade qualification	16.9	4.0	5.0	88.5	5.1	7.7	14.4	18.7	160.4
Certificate or diploma	20.1	21.3	25.4	14.2	46.8	34.4	10.1	24.9	197.3
Other	* 0.0	* 0.2	* 0.3	* 0.6	* 0.3	* 1.0	* 0.7	* 2.2	5.4
Without post-school qualifications(a)	56.4	8.6	8.9	62.2	60.5	59.6	82.0	150.1	488.4
Attended highest level of secondary school available	18.6	5.5	5.3	15.9	31.8	28.7	21.5	41.6	168.9
Did not attend highest level of secondary school available	36.8	* 3.1	* 3.7	46.3	28.7	30.9	59.1	106.5	315.0
Still at school	* 0.0	* 0.0	* 0.0	* 0.0	* 0.3	* 3.4	* 0.3	* 2.8	6.8
Total	115.2	130.3	47.5	172.5	135.8	118.7	112.6	210.2	1,042.7
ALL PERSONS									
With post-school qualifications	443.5	901.3	354.6	773.5	547.0	439.2	171.9	307.8	3,938.9
Degree	129.3	621.3	42.2	14.4	87.2	62.9	8.7	26.4	992.3
Trade qualification	130.2	33.4	65.7	675.4	39.4	83.4	106.3	135.8	1,269.7
Certificate or diploma	176.6	244.1	242.6	81.1	413.9	283.9	52.4	134.5	1,629.1
Other	7.5	* 2.6	4.2	* 2.6	6.5	9.0	4.4	11.1	47.8
Without post-school qualifications(a)	407.1	98.9	98.1	348.5	708.3	672.3	360.2	768.6	3,462.0
Attended highest level of secondary school available	119.8	59.6	46.4	89.6	284.4	293.2	67.8	190.0	1,150.8
Did not attend highest level of secondary school available	285.7	39.3	51.7	258.3	423.7	378.9	290.2	575.8	2,303.8
Still at school	* 0.2	* 0.5	* 1.0	* 0.9	* 2.9	83.6	* 1.5	42.6	133.2
Total	850.8	1,000.8	453.7	1,122.9	1,258.3	1,195.1	533.7	1,119.0	7,534.2

(a) Includes persons who never attended school. (b) Comprises United Kingdom, Ireland, Canada, South Africa, U.S.A. and New Zealand.

TABLE 9. UNEMPLOYED PERSONS AGED 15 TO 69: EDUCATIONAL ATTAINMENT, SUMMARY OF DEMOGRAPHIC CHARACTERISTICS AND DURATION OF UNEMPLOYMENT, FEBRUARY 1993

	<i>Educational attainment</i>							
	<i>With post-school qualifications</i>				<i>Without post-school qualifications</i>			
	<i>Degree</i>	<i>Trade qualification</i>	<i>Certificate or diploma</i>	<i>Total(a)</i>	<i>Attended highest level of secondary school available</i>	<i>Did not attend highest level of secondary school available</i>	<i>Total(b)</i>	<i>Total(c)</i>
— '000 —								
<i>Age —</i>								
15 - 24	13.3	24.8	57.4	97.4	131.2	127.2	258.4	400.7
25 - 34	20.0	35.8	57.9	116.6	32.9	106.6	139.7	256.3
35 - 44	18.4	32.6	42.9	94.3	20.5	80.7	102.3	196.6
45 - 54	10.2	20.8	20.7	53.0	8.9	55.8	65.4	118.4
55 - 69	* 3.4	21.1	6.9	32.8	4.1	30.0	35.6	68.4
<i>Marital status —</i>								
Married	36.0	75.7	91.1	206.1	44.6	182.3	229.8	435.9
Not-married	29.3	59.4	94.6	188.0	152.9	217.9	371.7	604.5
<i>Birthplace and period of arrival —</i>								
Born in Australia	32.6	92.8	123.4	254.2	144.8	297.1	441.9	734.8
Born outside Australia	32.7	42.3	62.3	139.9	52.7	103.1	159.5	305.6
Arrived before 1961	* 0.9	8.4	5.7	15.5	* 0.7	10.7	11.4	26.9
Arrived 1961 - 1970	* 3.8	13.9	13.2	31.9	6.0	28.1	35.9	67.8
Arrived 1971 - 1980	4.7	7.8	13.9	27.0	13.6	31.1	44.9	73.9
Arrived 1981 - 1990	12.8	9.5	21.6	44.3	27.0	27.9	56.2	104.3
Arrived 1991 - 1993	10.6	* 2.8	7.9	21.3	5.5	5.3	11.1	32.8
<i>Duration of current period of unemployment —</i>								
1 and under 4 weeks	8.2	15.0	31.6	55.4	32.3	44.8	77.9	142.3
4 and under 8 weeks	10.7	16.3	27.5	55.7	30.6	46.8	77.7	143.0
8 and under 13 weeks	9.6	13.4	17.9	41.2	37.4	27.3	64.9	114.8
13 and under 26 weeks	10.1	19.7	24.4	55.1	25.2	44.8	70.0	130.5
26 and under 52 weeks	9.7	22.1	26.8	59.6	24.1	61.0	85.7	149.9
52 and under 104 weeks	9.7	26.3	28.8	65.2	28.4	81.3	110.7	181.7
104 weeks and over	7.3	22.2	28.7	61.9	19.5	94.3	114.5	178.3
<i>Persons</i>	65.3	135.1	185.7	394.1	197.5	400.2	601.5	1,040.5
Males	33.5	123.3	69.1	231.2	115.4	260.5	377.9	631.1
Females	31.8	11.8	116.6	162.9	82.1	139.8	223.6	409.3
— per cent —								
<i>Unemployment rate</i>	6.2	9.6	10.2	9.1	14.6	14.8	14.8	12.1
<i>Unemployment/Population ratio</i>	5.4	8.1	7.8	7.4	10.9	8.8	9.4	8.5

(a) Includes persons with other post-school qualifications. (b) Includes persons who never attended school. (c) Includes persons still at school.

TABLE 10. UNEMPLOYED PERSONS AGED 15 TO 69: EDUCATIONAL ATTAINMENT, UNEMPLOYMENT RATE, AVERAGE AND MEDIAN DURATION OF UNEMPLOYMENT, FEBRUARY 1988 TO FEBRUARY 1993 ('000)

	Educational attainment							
	With post-school qualifications				Without post-school qualifications			
	Degree	Trade qualification	Certificate or diploma	Total(a)	Attend highest level of secondary school available	Did not attend highest level of secondary school available	Total(b)	Total(c)
— '000 —								
<i>Total unemployed —</i>								
1988	27.2	61.8	89.5	181.8	r 99.5	308.2	410.9	633.0
1989	32.3	46.6	83.6	165.9	r 99.6	283.8	384.8	588.0
1990	37.5	46.3	80.5	168.3	r 99.0	277.2	377.4	581.8
1991	44.2	88.2	131.2	269.3	r 134.6	350.8	486.4	800.7
1992	59.4	118.6	161.9	344.6	r 185.1	409.1	596.6	986.1
1993	65.3	135.1	185.7	394.1	197.5	400.2	601.5	1,040.5
— per cent —								
<i>Unemployment rate —</i>								
1988	3.6	4.8	6.1	5.1	r 9.4	10.2	10.0	8.1
1989	4.0	3.6	5.3	4.5	r 9.1	9.2	9.2	7.3
1990	4.3	3.6	5.0	4.4	r 8.3	9.0	8.8	7.0
1991	4.8	6.6	7.6	6.7	r 10.8	11.7	11.5	9.5
1992	5.9	8.7	9.1	8.3	r 14.2	14.2	14.2	11.5
1993	6.2	9.6	10.2	9.1	14.6	14.8	14.8	12.1
— weeks —								
<i>Average duration of unemployment —</i>								
1988	24.9	47.5	33.9	37.8	r 27.8	57.3	50.5	44.4
1989	23.4	63.6	31.7	39.4	r 23.9	59.1	50.1	44.8
1990	27.6	37.4	33.5	33.1	r 24.0	48.0	41.9	37.4
1991	17.9	36.0	30.0	30.2	r 20.7	49.7	41.7	36.3
1992	26.4	43.0	38.1	37.8	r 29.7	58.7	49.8	44.3
1993	37.8	51.3	43.9	46.9	34.4	66.9	56.4	51.3
<i>Median duration of unemployment —</i>								
1988	7	15	8	9	r 10	24	17	13
1989	8	19	8	9	r 8	18	13	11
1990	8	8	7	8	r 6	13	10	9
1991	8	13	11	11	r 9	18	13	13
1992	12	26	15	17	r 12	33	26	21
1993	16	26	19	22	12	34	26	24

(a) Includes persons with other post-school qualifications. (b) Includes persons who never attended school. (c) Includes persons still at school.

TABLE 11. PERSONS AGED 19 AND 22 YEARS: LABOUR FORCE STATUS AND EDUCATIONAL ATTAINMENT,
FEBRUARY 1985, FEBRUARY 1989 AND FEBRUARY 1993
(*000)

	19 years of age			22 years of age		
	1985	1989(a)	1993(a)	1985	1989(a)	1993(a)
MALES						
<i>Employed(b)</i>	93.4	105.4	84.6	109.3	97.5	108.8
With post-school qualifications(c)	9.2	12.2	12.3	47.0	39.0	53.9
Degree	*0.0	*0.1	*0.3	7.4	6.5	10.0
Trade qualification	8.1	{ 7.6	6.6	38.1	24.7	29.8
Certificate or diploma		{ 4.2	5.2		7.5	13.4
Without post-school qualifications(d)	84.2	92.7	72.3	62.2	58.6	54.8
Attended highest level of secondary school available	36.0	r 40.5	37.7	23.0	r 24.2	26.1
Did not attend highest level of secondary school available	48.1	52.1	34.6	39.2	34.4	28.7
<i>Unemployed(b)</i>	18.3	13.5	27.8	14.2	9.3	24.3
With post-school qualifications(c)	*2.9	*1.7	4.1	*3.7	*2.1	10.6
Degree	*0.0	*0.0	*0.0	*0.9	*0.8	*1.8
Trade qualification	*2.6	{ *0.7	*0.4	*2.6	*0.9	5.9
Certificate or diploma		{ *1.0	*3.4		*0.3	*2.9
Without post-school qualifications(d)	15.5	11.8	23.8	10.5	7.2	13.7
Attended highest level of secondary school available	5.4	r 5.5	16.6	*3.7	r *1.8	*3.0
Did not attend highest level of secondary school available	10.1	6.3	7.2	6.7	5.3	10.7
<i>Not in the labour force(b)</i>	14.3	15.7	22.7	8.6	9.5	14.6
With post-school qualifications(c)	*0.7	*0.3	*0.9	*2.8	*2.5	*2.2
Degree	*0.0	*0.0	*0.0	*1.0	*0.8	*0.3
Trade qualification	*0.7	{ *0.0	*0.0	*1.8	*1.1	*0.7
Certificate or diploma		{ *0.3	*0.9		*0.5	*1.1
Without post-school qualifications(d)	10.9	13.5	19.8	5.8	7.1	12.4
Attended highest level of secondary school available	8.3	r 11.1	17.9	*2.4	r 5.1	7.8
Did not attend highest level of secondary school available	*2.6	*2.2	*1.9	*3.4	*2.0	4.7
<i>All males(b)</i>	126.1	134.6	135.1	132.0	116.3	147.7
With post-school qualifications(c)	12.8	14.2	17.3	53.6	43.5	66.7
Degree	*0.0	*0.1	*0.3	9.3	8.1	12.1
Trade qualification	11.3	{ *8.4	7.0	42.5	26.8	36.4
Certificate or diploma		{ *5.5	9.5		8.3	17.4
Without post-school qualifications(d)	110.6	118.0	115.9	78.5	72.8	81.0
Attended highest level of secondary school available	49.6	r 57.1	72.2	29.1	r 31.1	36.9
Did not attend highest level of secondary school available	60.7	60.7	43.7	49.4	41.6	44.1
FEMALES						
<i>Employed(b)</i>	81.0	92.7	78.2	89.3	85.6	98.3
With post-school qualifications(c)	21.7	24.6	22.7	38.0	34.6	50.9
Degree	*0.8	*0.3	*0.0	7.6	7.2	12.1
Trade qualification	19.7	{ *1.5	*1.0	28.1	*2.3	5.2
Certificate or diploma		{ 22.4	21.4		25.0	33.2
Without post-school qualifications(d)	59.3	68.2	55.5	51.3	51.0	47.4
Attended highest level of secondary school available	25.3	r 41.8	41.6	18.0	r 22.8	25.7
Did not attend highest level of secondary school available	34.0	26.4	13.9	33.3	28.2	21.7
<i>Unemployed(b)</i>	20.6	16.0	18.8	10.8	10.7	17.8
With post-school qualifications(c)	*3.6	*2.9	5.3	*2.6	3.9	9.1
Degree	*0.0	*0.0	*0.0	*0.2	*0.8	*2.7
Trade qualification	*3.2	{ *0.1	*0.6	*2.2	*0.1	*0.7
Certificate or diploma		{ *2.8	4.8		*2.8	5.7
Without post-school qualifications(d)	17.0	13.1	13.5	8.2	6.7	8.7
Attended highest level of secondary school available	4.8	r 5.8	8.4	*0.7	r *2.9	4.7
Did not attend highest level of secondary school available	12.3	7.3	5.1	7.6	3.8	4.0
<i>Not in the labour force(b)</i>	22.8	27.3	35.7	33.3	23.6	28.8
With post-school qualifications(c)	*1.3	*3.0	*2.2	5.5	4.7	9.0
Degree	*0.0	*0.0	*0.0	*0.9	*0.5	*3.4
Trade qualification	*0.6	{ *0.0	*0.3	*4.4	*0.3	*0.1
Certificate or diploma		{ *3.0	*1.9		3.9	5.1
Without post-school qualifications(d)	20.0	22.4	32.0	27.8	18.9	19.7
Attended highest level of secondary school available	7.4	r 15.8	24.1	*6.3	r 5.6	4.5
Did not attend highest level of secondary school available	12.6	6.6	7.9	21.5	13.3	14.7
<i>All females(b)</i>	124.4	136.0	132.8	133.3	119.9	144.9
With post-school qualifications(c)	26.6	30.4	30.2	46.0	43.2	69.1
Degree	*0.8	*0.3	*0.0	8.7	8.5	18.2
Trade qualification	23.4	{ *1.6	*1.9	34.7	*2.7	6.0
Certificate or diploma		{ 28.2	28.1		31.7	44.0
Without post-school qualifications(d)	96.3	103.7	101.0	87.3	76.7	75.8
Attended highest level of secondary school available	37.4	r 63.4	74.0	25.0	r 31.4	34.9
Did not attend highest level of secondary school available	58.8	40.3	27.0	62.3	45.3	40.4

See end of table for footnotes.

TABLE 11. PERSONS AGED 19 AND 22 YEARS: LABOUR FORCE STATUS AND EDUCATIONAL ATTAINMENT,
FEBRUARY 1985, FEBRUARY 1989 AND FEBRUARY 1993—continued
(*000)

	19 years of age			22 years of age		
	1985	1989(a)	1993(a)	1985	1989(a)	1993(a)
PERSONS						
<i>Employed(b)</i>	174.4	198.1	162.8	198.5	183.1	207.1
With post-school qualifications(c)	30.9	36.8	35.0	85.0	73.5	104.9
Degree	*0.8	*0.4	*0.3	15.1	13.7	22.1
Trade qualification		9.2	7.6	66.2	27.0	35.0
Certificate or diploma	27.7	{ 26.6	26.6		32.5	46.6
Without post-school qualifications(d)	143.5	160.8	127.8	113.5	109.6	102.2
Attended highest level of secondary school available	61.3	r 82.3	79.3	41.0	r 47.0	r 51.8
Did not attend highest level of secondary school available	82.0	78.5	48.5	72.5	62.6	50.5
<i>Unemployed(b)</i>	39.0	29.5	46.7	25.0	20.0	42.1
With post-school qualifications(c)	6.5	4.6	9.4	6.3	6.0	19.7
Degree	*0.0	*0.0	*0.0	*1.1	*1.5	4.5
Trade qualification		*0.8	*0.9		*1.0	6.6
Certificate or diploma	5.8	{ 3.7	8.1	4.8	*3.2	8.6
Without post-school qualifications(d)	32.5	24.9	37.3	18.7	14.0	22.4
Attended highest level of secondary school available	10.2	r 11.3	25.0	*4.4	r 4.7	7.7
Did not attend highest level of secondary school available	22.3	13.6	12.3	14.3	9.1	14.7
<i>Not in the labour force(b)</i>	37.1	43.1	58.4	41.8	33.1	43.4
With post-school qualifications(c)	*2.0	*3.3	*3.1	8.3	7.1	11.2
Degree	*0.0	*0.0	*0.0	*1.9	*1.3	*3.8
Trade qualification		*0.0	*0.3		*1.4	*0.9
Certificate or diploma	*1.3	{ *3.3	*2.8	6.2	4.4	6.2
Without post-school qualifications(d)	30.8	35.9	51.9	33.6	26.0	32.2
Attended highest level of secondary school available	15.6	r 26.8	42.0	8.7	r 10.7	12.3
Did not attend highest level of secondary school available	15.2	8.8	9.9	24.9	15.3	19.3
<i>All persons(b)</i>	250.5	270.7	267.9	265.3	236.2	292.5
With post-school qualifications(c)	39.4	44.7	47.5	99.6	86.7	135.8
Degree	*0.8	*0.4	*0.3	18.0	16.5	30.3
Trade qualification		10.0	8.9		29.5	42.4
Certificate or diploma	34.8	{ 33.6	37.6	77.2	40.1	61.5
Without post-school qualifications(d)	206.9	221.7	216.9	165.7	149.5	156.8
Attended highest level of secondary school available	87.1	r 120.5	145.6	54.0	r 62.4	71.8
Did not attend highest level of secondary school available	119.6	101.0	71.3	111.7	86.9	84.5

(a) Prior to February 1987 the data now published in the Educational attainment categories 'Trade qualifications' and 'Certificate or diploma' were published as 'Trade, technical or other certificate'. (b) Includes persons still attending school. (c) Includes persons with Other post-school qualifications. (d) Includes persons who never attended school.

TABLE 12. PERSONS AGED 19 TO 22 YEARS: DISTRIBUTION BY EDUCATIONAL ATTAINMENT
FEBRUARY 1985, FEBRUARY 1989 AND FEBRUARY 1993
(per cent)

	19 years of age			22 years of age		
	1985	1989	1993	1985	1989	1993
<i>Males</i>						
With post-school qualifications	10.1	10.6	12.8	40.6	37.4	45.2
Without post-school qualifications(a)	87.7	87.6	85.8	59.4	62.6	54.8
Attended highest level of secondary school available	39.4	r 42.4	53.5	22.0	r 26.7	25.0
Did not attend highest level of secondary school available	48.2	45.1	32.3	37.4	35.8	29.9
<i>Total(b)</i>	100.0	100.0	100.0	100.0	100.0	100.0
<i>Females</i>						
With post-school qualifications	21.4	22.4	22.7	34.5	36.0	47.7
Without post-school qualifications(a)	77.4	76.2	76.1	65.5	64.0	52.3
Attended highest level of secondary school available	30.1	r 46.6	55.7	18.7	r 26.2	24.1
Did not attend highest level of secondary school available	47.3	29.6	20.3	46.8	37.8	27.9
<i>Total(b)</i>	100.0	100.0	100.0	100.0	100.0	100.0
<i>Persons</i>						
With post-school qualifications	15.7	16.5	17.7	37.5	36.7	46.4
Without post-school qualifications(a)	82.6	81.9	81.0	62.5	63.3	53.6
Attended highest level of secondary school available	34.8	r 44.5	54.6	20.4	r 26.4	24.5
Did not attend highest level of secondary school available	47.7	37.3	26.4	42.1	36.8	28.8
<i>Total(b)</i>	100.0	100.0	100.0	100.0	100.0	100.0

(a) Includes persons who never attended school. (b) Includes persons still attending school.

TABLE 13. MAIN SURVEY POPULATION TOTALS BY STATES AND TERRITORIES, FEBRUARY 1993
('000)

<i>Main survey populations</i>	<i>State of usual residence</i>								<i>Australia</i>
	<i>New South Wales</i>	<i>Victoria</i>	<i>Queensland</i>	<i>South Australia</i>	<i>Western Australia</i>	<i>Tasmania</i>	<i>Northern Territory</i>	<i>Australian Capital Territory</i>	
<i>Population 1:</i> Persons aged 15 to 69	4,164.5	3,149.5	2,131.4	1,029.3	1,188.0	316.5	110.1	216.3	12,305.6
<i>Population 2:</i> Employed persons aged 15 to 69	2,500.4	1,901.9	1,330.6	640.2	752.9	184.7	67.8	155.6	7,534.2
<i>Population 3:</i> Unemployed persons aged 15 to 69	355.8	280.5	175.9	88.4	89.5	27.4	8.1	14.8	1,040.5
<i>Population 4:</i> Persons aged 15 to 69 who are not in the labour force	1,308.4	967.1	624.9	300.6	345.6	104.4	34.1	45.8	3,731.0
<i>Population 5:</i> Persons aged 15 to 69 who are in the labour force	2,856.2	2,182.4	1,506.5	728.6	842.4	212.1	76.0	170.4	8,574.7
<i>Population 6:</i> Persons aged 15 to 69 with a degree qualification	414.6	343.4	168.3	88.6	112.0	21.4	12.9	47.0	1,208.3
<i>Population 7:</i> Persons aged 15 to 69 with a trade qualification	573.3	398.0	307.0	138.4	180.0	42.3	16.3	21.2	1,676.6
<i>Population 8:</i> Persons aged 15 to 69 with a certificate or diploma qualification	894.4	541.2	377.5	196.7	240.0	52.2	23.2	44.4	2,369.5
<i>Population 9:</i> Persons aged 15 to 24	890.4	697.1	489.8	218.1	259.9	69.4	26.9	54.6	2,706.2
<i>Population 10:</i> Persons age 15 to 24 who attended an educational institution in the previous year	523.0	415.7	277.6	124.4	137.5	36.6	16.4	35.3	1,566.5
<i>Population 11:</i> Employed persons aged 15 to 69 with a degree qualification	341.1	278.1	140.9	73.8	91.1	16.1	9.7	41.6	992.3
<i>Population 12:</i> Employed persons aged 15 to 69 with a trade qualification	434.1	294.1	235.2	103.0	138.8	33.3	13.3	17.9	1,269.7
<i>Population 13:</i> Employed persons aged 15 to 69 with a certificate or diploma qualification	619.6	362.6	258.7	141.9	162.0	34.6	16.1	33.7	1,629.1
<i>Population 14:</i> Persons aged 15 to 69 with a post-school qualification	1,900.7	1,300.1	866.4	428.8	539.4	118.5	53.3	114.8	5,322.1

EXPLANATORY NOTES

Introduction

The monthly population survey (which is described in *The Labour Force, Australia* (6203.0)) comprises the monthly labour force survey and supplementary topics. This publication contains some results of a supplementary survey run in association with the February 1993 labour force survey conducted throughout Australia.

2. Of the respondents to the labour force survey, those who fell within the scope of the supplementary survey were asked additional questions. They were asked about their highest educational qualifications. For persons with post-school qualifications, the information sought included field of study, and year and country in which they obtained their highest qualification; and for those without post-school qualifications, it included whether they completed the highest level of secondary schooling available, and if not, at what age they left school. For those persons aged 15 to 25, information was also sought on their attendance at an educational institution in the previous calendar year, type of institution attended, student status and whether they attended for the full academic year.

Scope

3. The scope of this supplementary survey includes all persons aged 15 to 69 except:

- (a) members of the permanent defence forces;
- (b) certain diplomatic personnel of overseas governments, customarily excluded from census and estimated populations;
- (c) overseas residents in Australia;
- (d) members of non-Australian defence forces (and their dependents) stationed in Australia;
- (e) visitors to private dwellings;
- (f) some patients in hospitals and sanitoriums; and
- (g) inmates of reformatories, gaols etc.

Coverage

4. In the population survey, coverage rules are applied which aim to ensure that each person is associated with only one dwelling, and hence has only one chance of selection. See *The Labour Force, Australia* (6203.0) for more details.

Definitions

5. Further definitions of labour force and demographic classifications appearing in this publication are given in *The Labour Force, Australia* (6203.0).

6. Unless otherwise stated, all characteristics referenced in this publication relate to the week before the interview.

Results of the survey

7. Due to differences in the scope and method of estimation used in this supplementary survey and that used in the labour force survey, there are some small variations between estimates in this publication and those in the corresponding issue of *The Labour Force, Australia* (6203.0).

8. The estimates in this publication refer to information collected in the survey month and, due to seasonal factors, may not be representative of other months of the year.

9. Results of similar surveys, conducted annually since February 1979, have been given in previous issues of this publication.

10. This survey will be conducted again in February 1994.

Unpublished tables

11. As well as the statistics included in this and related publications, the ABS may have other relevant unpublished data available. Inquiries should be made to Ms Nicolle Witmann on Canberra (06) 252 6578.

Survey sample redesign

12. The Labour Force Survey (LFS) sample has been redesigned and reselected using information collected in the 1991 Population Census. As a result, the standard errors used in this supplementary survey differ from those used in surveys of the same topic run prior to September 1992. For details, see *Information Paper—Labour Force Survey—Sample Design* (6269.0).

Estimation procedure

13. The estimates are derived from the population survey by use of a ratio estimation procedure which ensures that the estimates conform to an independently estimated distribution of the population for each capital city and remainder of state by age, gender and labour force status, rather than to the corresponding distribution within the sample itself.

Reliability of the estimates

14. Estimates in this publication are subject to sampling and non-sampling error. For more information refer to the Technical Note, on page 18.

Related publications

15. Other ABS publications which may be of interest include:

The Labour Force, Australia (6203.0) — issued monthly.

Transition from Education to Work, Australia (6227.0) — issued annually.

Participation in Education, Australia (6272.0) — issued annually.

Schools, Australia (4221.0) — issued annually.

Education and Training in Australia (4224.0) — issued irregularly, first and latest issue: November 1992.

Employer Training Expenditure, Australia (6353.0) — issued irregularly, latest issue: July to September 1990.

Directory of Education and Training Statistics, Australia (1136.0) — issued irregularly, first and latest issue: March 1993.

How Workers Get Their Training, Australia (6278.0) — issued irregularly, first and latest issue: 1989.

Career Paths of Tradespersons, Australia (6243.0) — issued irregularly, latest issue: 1989.

Career Paths of Qualified Nurses, Australia (6277.0) — issued irregularly, first and latest issue: 1989.

Student Finances, Australia (6550.0) — issued irregularly, first and latest issue: 1991.

16. Current publications produced by the ABS are listed in the *Catalogue of Publications and Products, Australia* (1101.0). The ABS also issues, on Tuesdays and Fridays, a *Publications Advice* (1105.0) which lists publications to be released in the next few days. The *Catalogue and Publications Advice* are available from any ABS office.

Symbols and other usages

- * subject to sampling variability too high for most practical uses. See the Technical Note.
- . . not applicable
- r revised

17. Because estimates have been rounded, discrepancies may occur between sums of the component items and totals.

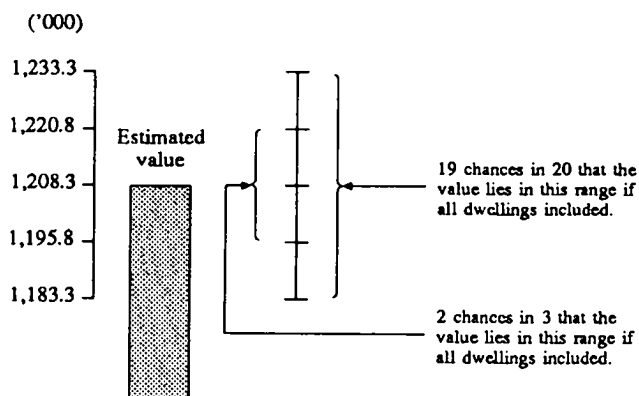
TECHNICAL NOTE

Estimation procedure

Since the estimates in this publication are based on information obtained from occupants of a sample of dwellings, they are subject to sampling variability, that is, they may differ from those that would have been produced if all dwellings had been included in the survey. One measure of the likely difference is given by the standard error, which indicates the extent to which an estimate might have varied by chance because only a sample of dwellings was included. There are about two chances in three that a sample estimate will differ by less than one standard error from the number that would have been obtained if all dwellings had been included, and about nineteen chances in twenty that the difference will be less than two standard errors. Another measure of the likely difference is the relative standard error, which is obtained by expressing the standard error as a percentage of the estimates.

2. Space does not allow for the separate indication of the standard errors of all estimates in this publication. A table of standard errors for general application is given on the following page. Since they are averages based on calculations for a limited number of past surveys over a wide range of labour force characteristics these numbers will not give a precise measure of the standard error of a particular estimate but they will provide an indication of its magnitude.

3. An example of the calculation and the use of standard errors in relation to estimates of persons is as follows. Table 1 shows the estimated number of persons with a Degree qualification in February 1993 is 1,208,300. Since this estimate is between 1,000,000 and 2,000,000 in the standard error table, the standard error for Australia will be between 11,800 and 15,200 and can be approximated by interpolation as 12,500 (rounded to the nearest 100). Therefore, there are about two chances in three that the value that would have been produced if all dwellings had been included in the survey will fall in the range 1,195,800 to 1,220,800. There are about nineteen chances in twenty that the value will fall between 1,183,300 and 1,233,300. This example is illustrated in the following diagram.



4. As can be seen from the standard error table, the smaller the estimate the higher is the relative standard error. Very small estimates are thus subject to such high standard error (relative to the size of the estimate) as to detract seriously from their value for most reasonable uses. In the tables in this publication only estimates with relative standard errors of 25 per cent or less and percentages based on such estimates are considered sufficiently reliable for most purposes. However, estimates and percentages with larger relative standard errors have been included and are preceded by an asterisk (e.g. *3.4) to indicate they are subject to high standard errors and should be used with caution.

5. Proportions and percentages formed from the ratio of two estimates are also subject to sampling errors. The size of the error depends on the accuracy of both the numerator and the denominator. A formula to approximate the relative standard error (RSE) of a proportion is given below:

$$RSE (x/y) = \sqrt{[RSE (x)]^2 + [RSE (y)]^2}$$

6. Considering the example from paragraph 3 above, of the 1,208,300 persons with a Degree qualification in February 1993, 1,057,700 or 87.5 per cent participated in the labour force. The standard error of 1,057,700 is approximately 12,000 so the relative standard error is 1.1 per cent. The relative standard error for 1,208,300 is 1.0 per cent. Applying the above formula, the relative standard error of the proportion is $\sqrt{(1.1)^2 + (1.0)^2}$ or 1.5 per cent, giving a standard error for the proportion (87.5 per cent) of 0.4 percentage points. Therefore, there are about two chances in three that the participation rate of persons with a Degree qualification in February 1993 is between 87.1 per cent and 87.9 per cent and nineteen chances in twenty the proportion is within the range 86.7 per cent to 88.3 per cent.

7. Published estimates may also be used to calculate the difference between two survey estimates (of numbers or percentages). Such an estimate is subject to sampling error. The sampling error of the difference between two estimates depends on their standard errors and the relationship (correlation) between them. An approximate standard error (SE) of the difference between two estimates (x-y) may be calculated by the following formula:

$$SE (x-y) = \sqrt{[SE (x)]^2 + [SE (y)]^2}$$

While this formula will only be exact for differences between separate and uncorrelated characteristics of subpopulations it is expected to provide a good approximation for all differences likely to be of interest in this publication.

8. The imprecision due to sampling variability, which is measured by the standard error, should not be confused with inaccuracies that may occur because of imperfections in reporting by interviewers and respondents, and errors made in coding and processing data. Inaccuracies of this kind are referred to as the non-sampling error, and they

may occur in any enumeration, whether it be a full count or a sample. Every effort is made to reduce the non-sampling error to a minimum by careful design of questionnaires, intensive training and supervision of interviewers and efficient operating procedures.

STANDARD ERRORS OF ESTIMATES

Size of estimate	NSW	Vic	Qld	SA	WA	Tas	NT	ACT	Australia	
									Number	Per cent of estimate
100				120		90	100	80	130	125.4
200		230	210	180	210	130	130	120	190	94.9
300	320	290	270	220	250	160	160	140	240	80.2
400	380	340	310	250	290	180	180	160	280	71.0
500	420	380	340	280	330	200	200	180	320	64.5
600	460	420	380	310	360	220	220	190	360	59.6
700	500	450	410	330	390	240	230	210	390	55.7
800	540	490	440	350	410	260	250	220	420	52.5
900	570	520	460	370	430	270	260	230	450	49.8
1,000	600	540	490	390	460	280	270	240	480	47.5
1,100	630	570	510	410	480	300	280	250	500	45.5
1,200	660	600	530	430	500	310	300	260	520	43.7
1,300	680	620	550	450	520	320	310	270	550	42.2
1,400	710	640	570	460	540	330	320	280	570	40.8
1,500	730	670	590	480	550	340	330	290	590	39.5
1,600	760	690	610	490	570	350	340	300	610	38.3
1,700	780	710	630	510	590	360	350	310	630	37.3
1,800	800	730	650	520	600	370	350	320	650	36.3
1,900	820	750	670	530	620	380	360	320	670	35.4
2,000	840	770	680	550	630	390	370	330	690	34.6
2,100	860	790	700	560	650	400	380	340	710	33.8
2,200	880	810	710	570	660	400	390	340	730	33.1
2,300	900	820	730	580	670	410	400	350	740	32.4
2,400	920	840	750	590	690	420	400	360	760	31.7
2,500	940	860	760	610	700	430	410	360	780	31.1
3,000	1,000	940	830	660	760	460	450	390	860	28.5
3,500	1,100	1,000	890	710	810	490	480	420	930	26.5
4,000	1,150	1,100	950	750	860	520	510	440	990	24.9
4,500	1,250	1,150	1,000	790	910	540	540	460	1,050	23.5
5,000	1,300	1,200	1,050	830	960	570	570	490	1,100	22.3
6,000	1,400	1,300	1,150	900	1,050	610	620	520	1,200	20.4
8,000	1,600	1,500	1,300	1,000	1,150	680	700	590	1,400	17.7
10,000	1,800	1,650	1,450	1,100	1,300	740	780	640	1,600	15.8
20,000	2,450	2,250	1,950	1,500	1,750	940	1,050	840	2,200	11.0
30,000	2,900	2,700	2,300	1,800	2,050	1,050	1,300	990	2,650	8.9
40,000	3,300	3,000	2,600	2,000	2,300	1,150	1,500	1,100	3,050	7.6
50,000	3,600	3,300	2,850	2,200	2,550	1,250	1,650	1,200	3,400	6.8
100,000	4,800	4,400	3,800	2,850	3,300	1,500	2,300	1,550	4,600	4.6
200,000	6,300	5,800	5,000	3,700	4,350	1,750	3,200	1,950	6,200	3.1
300,000	7,300	6,700	5,800	4,250	5,000	1,950		2,250	7,300	2.4
400,000	8,200	7,500	6,500	4,750	5,600	2,050			8,200	2.1
500,000	8,900	8,100	7,000	5,100	6,100	2,150			9,000	1.8
1,000,000	11,400	10,400	9,000	6,400	7,700				11,800	1.2
2,000,000	14,400	13,100	11,500	8,100	9,800				15,200	0.8
5,000,000	19,500	17,600	15,500						21,000	0.4
10,000,000	24,100								26,500	0.3
20,000,000									32,900	0.2

— Where the standard error is approximately 25% of the estimate.

GLOSSARY

Average duration of unemployment: obtained by dividing the aggregate number of weeks a group has been unemployed by the number of persons in that group.

Certificate or diploma: completion of an approved certificate or diploma in secretarial or business studies, administration, teaching, nursing, etc.

Degree: a bachelor degree (including honours), a graduate or post-graduate diploma, masters degree or a doctorate.

Educational attainment: measures the highest qualification obtained by the respondent. Qualifications may include those obtained at other than educational institutions (e.g. nursing qualifications obtained at a hospital).

Highest level of secondary school available: the highest level of secondary schooling (or equivalent) offered by the education system at the time the respondent left school.

Industry: all occurrences of industry in this publication refer to Industry Division as defined by the Australian Standard Industry Classification (ASIC).

Main field of study: respondents with a degree; trade qualification; or a certificate or diploma (as defined) indicated the main field of study for their highest qualification.

Median duration of unemployment: the duration which divides unemployed persons into two equal groups, one comprising persons whose duration of unemployment is above the median and the other, persons whose duration is below it.

Occupation: all occurrences of occupation in this publication refer to Major Group as defined by the Australian Standard Classification of Occupation (ASCO).

Other post-school qualifications: completion of other types of education, e.g. adult education, preparatory/bridging course or non-vocational course.

Post-school qualifications: qualifications held by those persons who had left school and answered 'Yes' to the question: 'Since leaving school have you obtained a trade qualification, certificate, diploma, degree or any other qualification?'. Respondents indicated which of the following groups best described their highest qualification: Degree; Trade qualification; Certificate or diploma; Other post-school qualification.

Still at school: current school attendance was recorded only for persons aged fifteen to twenty years.

Trade qualification: completion of an approved trade/technical apprenticeship in fitting and turning, hairdressing, plumbing, carpentry, etc.

Unemployment/population ratio: the number of unemployed persons, for any group, expressed as a percentage of all persons in the same group.

DATA ITEMS AND HOW TO ORDER SPECIAL TABLES FROM THIS SURVEY

The ABS offers a range of unpublished data from this survey upon request. When ordering special tables from this survey, please ensure you identify the population(s) and the variable(s) which you require.

This section specifies the variables and populations which relate to the survey and includes an order form for special tables.

The population(s) for a particular variable refers to the person in the survey to whom the variable relates.

POPULATIONS

POPULATION 1:	Persons aged 15 to 69
POPULATION 2:	Employed persons aged 15 to 69
POPULATION 3:	Unemployed persons aged 15 to 69
POPULATION 4:	Persons not in the labour force aged 15 to 69
POPULATION 5:	Persons in the labour force aged 15 to 69
POPULATION 6:	Persons aged 15 to 69 who had a degree qualification
POPULATION 7:	Persons aged 15 to 69 who had a trade/technical qualification or apprenticeship
POPULATION 8:	Persons aged 15 to 69 who had a certificate or diploma
POPULATION 9:	Persons aged 15-25 years
POPULATION 10:	Persons aged 15-25 years who attended an educational institution last year
POPULATION 11:	Employed persons aged 15 to 69 who had a degree qualification
POPULATION 12:	Employed persons aged 15 to 69 who had a trade/technical qualification or apprenticeship
POPULATION 13:	Employed persons aged 15 to 69 who had a certificate or diploma
POPULATION 14:	Persons aged 15 to 69 with a post-school qualification

VARIABLE	POPULATIONS	VARIABLE	POPULATIONS
1 STATE OF USUAL RESIDENCE	All	9 AGE	All
Australia		15-19	
New South Wales		20-24	
Victoria		25-34	
Queensland		35-44	
South Australia		45-54	
Western Australia		55-59	
Tasmania		60-64	
Northern Territory		65-69	
Australian Capital Territory			
		N.B. Other age groupings are available	
2 AREA OF USUAL RESIDENCE	All	10 LABOUR FORCE STATUS	1,6-10,14
Metropolitan		Labour force	
Non-metropolitan		Employed	
		Unemployed	
3 DISSEMINATION REGION	All	Not in labour force	
Standard labour force dissemination regions			
		Unemployment rate	
4 SEX	All	Participation rate	
Males			
Females			
5 MARITAL STATUS	All	11 STATUS OF WORKER	2,11-13
Married		Wage and salary earners	
Not-married		Other	
6 FAMILY STATUS	All	12 FULL-TIME / PART-TIME STATUS (ALL JOBS)	2,11-13
Member of a family		Full-time workers	
Husband or wife		Part-time workers	
With dependants present			
Without dependants present		13 OCCUPATION	2,11-13
Sole parent		Managers and administrators	
Other family head		Professionals	
Full-time student aged 15-24 (a)		Para-professionals	
Other child of family head		Tradespersons	
Other relative of family head		Clerks	
Not a member of a family		Salespersons and personal service workers	
Living alone		Plant and machine operators, and drivers	
Not living alone		Labourers and related workers	
Family status not determined			
(a) Excludes persons aged 21 to 24 attending school		14 INDUSTRY	2,11-13
		Agriculture, forestry, fishing and hunting	
7 BIRTHPLACE	All	Mining	
Born in Australia		Manufacturing	
Born outside Australia		Electricity, gas and water	
Born in main English-speaking countries(a)		Construction	
Born in other countries		Wholesale and retail trade	
Not asked (boarding school pupils)		Transport and storage	
		Communication	
(a) Comprises United Kingdom and Ireland, New Zealand, Canada, U.S.A. and South Africa.		Finance, property and business services	
N.B. More detailed country groupings available.		Community services	
		Recreation, personal and other services	
8 PERIOD OF ARRIVAL	All		
Born in Australia			
Born outside Australia			
Arrived before 1961			
Arrived 1961-1970			
Arrived 1971-1980			
Arrived 1981-1990			
Arrived 1991-1993			
Not asked (Boarding school pupils)			

VARIABLE	POPULATIONS	VARIABLE	POPULATIONS
15	EDUCATIONAL ATTAINMENT 1-5,9-10 With post-school qualifications Degree Trade qualification Certificate or diploma Other Without post-school qualifications Attended highest level of secondary school available Did not attend highest level of secondary school available Left at age - 18 years or over 17 years 16 years 15 years 14 years 13 years or under Never attended school Still at school	20	WHETHER ATTENDED FULL-YEAR OR PART-YEAR 10 Attended full-year Attended part of year
16	MAIN FIELD OF STUDY - DEGREE 6,11 Administration, business studies, commerce Law Education Medicine Science, mathematics, computing Veterinary science, agriculture, forestry Engineering Architecture Social sciences, arts, humanities Other	21	STUDENT STATUS LAST YEAR 10 Full-time Part-time
17	MAIN FIELD OF STUDY - TRADE QUALS / APPRENTICESHIP 7,12 Metal Service Building Electrical Food and drink Wood and furniture Printing and allied Automotive, mechanical Footwear, clothing, textile Other	22	DURATION OF CURRENT PERIOD OF UNEMPLOYMENT 3 1 and under 4 weeks 4 and under 8 weeks 8 and under 13 weeks 13 and under 26 weeks 26 and under 52 weeks 52 and under 104 weeks 104 weeks and over
18	MAIN FIELD OF STUDY - CERTIFICATE OR DIPLOMA 8,13 Business, administration, commerce Secretarial, typing, data processing Education, teacher training Nursing Other health, para-medical Science, computing, agriculture Engineering, architecture Transport, communication Arts, social studies, crafts Other	23	COUNTRY OBTAINED HIGHEST POST-SCHOOL QUALIFICATION 6-8,11-14 In Australia Outside Australia Main English-speaking countries(a) Other countries (a) Comprises United Kingdom and Ireland, New Zealand, Canada, U.S.A. and South Africa.
19	TYPE OF INSTITUTION ATTENDED LAST YEAR 10 Secondary school Higher Education institution TAFE Other	24	YEAR OBTAINED HIGHEST POST-SCHOOL QUALIFICATION 6-8,11-14 Before 1951 1951 - 1960 1961 - 1970 1971 - 1980 1981 - 1985 1986 - 1990 1991 - 1993

SPECIAL DATA REQUESTS
LABOUR FORCE STATUS AND EDUCATIONAL ATTAINMENT,
AUSTRALIA, FEBRUARY 1993

Please specify your special data request(s) on the order form (or on a photocopy of the form) provided on the following page.

The following points should be noted when requesting special tables:

1. Table requests will be available on computer printout, floppy disk or microfiche.
2. The current cost of special tables is as follows —

No. of variables (excluding populations)	Cost per table (\$)
2	120
3	150
4	225
5	330
6 or more	negotiable

NOTE : Prices quoted are subject to revisions.

3. Return the completed **SPECIAL DATA REQUEST ORDER FORM** together with the address advice to —

Assistant Director
 Education Sub-section
 Australian Bureau of Statistics
 PO Box 10
 Belconnen ACT 2616

or
 Facsimile No. (06) 251 5486

4. The invoiced cost is payable in full within 28 days of receipt of the data.
5. Any inquiries about this order should be directed to Ms Nicolle Wittmann on (06) 252 6578.

SPECIAL DATA REQUEST ORDER FORM

Labour Force Status and Educational Attainment, February 1993

	TABLE No.	VARIABLE No's	TABLE POPULATION	COST(\$)
Example	1	4 (Sex)	2	225
		by 7 (Birthplace)		
		by 9 (Age)		
		by 15 (Educational Attainment)		

ADDRESS ADVICE — PLEASE FORWARD MY ORDER AND INVOICE TO:

NAME _____

ORGANISATION _____

ADDRESS _____

POSTCODE _____

FACSIMILE NO. _____ TELEPHONE _____

Signature _____ Date / / _____



TRANSITION FROM EDUCATION TO WORK, AUSTRALIA, MAY 1992

This annual publication, released on 19th November 1992, provides current information from a household based survey on the labour force characteristics of persons aged 15 to 64 in the educational system, both at the time of the survey and in the previous calendar year. For those attending and those not attending an educational institution it gives a broad picture of their contribution to the workforce, their level of education and the type of work they are engaged in.

The publication features information on:

- socio-demographic characteristics such as sex, age, labour force status and educational attainment
- work history details such as occupation and industry
- type of institution attending
- type of school last attended
- level of course attended/attending
- highest level of education obtained
- information on the characteristics of apprentices.

The publication also includes a full list of the extensive range of data items collected in the survey that will assist you in ordering tailored tables to meet your individual requirements.

To order your copy of *Transition from Education to Work, Australia, May 1992 (6227.0)*, priced at \$12.50, contact an **ABS Bookshop** in your State or complete the order form at the back of this publication.

PARTICIPATION IN EDUCATION, AUSTRALIA, SEPTEMBER 1992

This annual publication, released on 24th February 1992, provides current information from a household based survey on the level of current educational attendance of the Australian population aged 15 to 24. Type of institution attending, whether attendance is full-time or part-time and level of course being studied is also collected. Trends in education are monitored by providing comparisons of time series data by age, type of institution attending and labour force status.

The publication features information on:

- demographic characteristics such as age, sex, and country of birth
- labour force status of both the student and non-student population
- type of educational institution currently attending
- level of course being studied
- type of school last attended
- an explanation of concepts and methodology
- a selection of findings from the survey.

The publication also includes a full list of the extensive range of data items collected in the survey that will assist you in ordering tailored tables to meet your individual requirements.

To order your copy of *Participation in Education, Australia, September 1992 (6272.0)*, priced at \$12.70, contact an **ABS Bookshop** in your State or complete the order form at the back of this publication.

SCHOOLS, AUSTRALIA, 1992

This annual publication, released on 21st April 1993, provides statistics on schools, students and staff involved in the provision or administration of primary and secondary education, in government and non-government schools.

The publication features information on:

- Schools classified by type
- Students classified by age level/year of education, sex and type of school attended
- Staff classified by category of school and major function.

The publication includes tables showing student retention rates, student/teaching staff ratios and student/total school staff ratios.

To order your copy of *Schools, Australia, 1992 (4221.0)*, priced at \$20.40, contact an ABS Bookshop in your State or complete the order form at the back of this publication.

EDUCATION AND TRAINING IN AUSTRALIA

This new reference publication, released in November 1992, is a comprehensive report on all levels of education and training across Australia. It provides descriptive and analytical text, quick reference tables, graphs, time series data, and detailed tables.

Areas covered by Education and Training in Australia include::

- definitions of education and training
- infrastructure of education and training in Australia
- attainment in terms of education and training
- students and participants in training
- staff in education institutions
- financial resources and employer support.

To order your copy of this 200 page publication, *Education and Training in Australia (422.0)*, priced at \$45.00, contact an ABS Bookshop in your State or complete the order form at the back of this publication.

DIRECTORY OF EDUCATION AND TRAINING STATISTICS

This new publication, released on 3 May 1993, is a catalogue of ABS statistics related directly, or indirectly, to education and training in Australia. It provides descriptive information on the various data sources, data items available, frequency of collections, publications produced, and any reliability/confidentiality provisions.

To find out more about the availability of education and training data, or obtain your complimentary copy of the *Directory of Education and Training Statistics (1136.0)*, contact Pam Lee on (06) 252 7798 or complete the order form at the back of this publication.



For more information ...

The ABS publishes a wide range of statistics and other information on Australia's economic and social conditions. Details of what is available in various publications and other products can be found in the *ABS Catalogue of Publications and Products* available at all ABS Offices (see below for contact details).

Information Consultancy Service

Information tailored to special needs of clients can be obtained from the Information Consultancy Service available at ABS Offices (see Information Inquiries below for contact details).

Electronic Data Services

A wide range of ABS data are available on electronic media. Selections of most frequently requested statistics are available, updated daily, on DISCOVERY (Key *656#). The ABS PC TELESTATS service delivers major economic indicator main features ready to download into personal computers on the day of release. The PC AUSSTATS service enables on-line access to a data base of thousands of up-to-date time series. Selected datasets are also available on diskette or CD-ROM. For more details on electronic data services available, contact Information Services in any of the ABS Offices (see Information Inquiries below for contact details).

Bookshops and Subscriptions

There are over 500 titles of various publications available from ABS bookshops in all ABS Offices (see below Bookshop Sales for contact details). The ABS also provides a subscription service through which nominated publications are provided by mail on a regular basis at no additional cost (telephone Publications Subscription Service toll free on 008 02 0608 Australia wide).

Sales and Inquiries

	<i>Information Inquiries</i>	<i>Bookshop Sales</i>
Regional Offices		
SYDNEY (02)	268 4611	268 4620
MELBOURNE (03)	615 7000	615 7829
BRISBANE (07)	222 6351	222 6350
PERTH (09)	323 5140	323 5307
ADELAIDE (08)	237 7100	237 7582
HOBART (002)	205 800	205 800
CANBERRA (06)	207 0315	207 0315
DARWIN (089)	432 111	432 111
National Office		
ACT (06)	252 6007	252 5979



Information Services, ABS, PO Box 10, Belconnen ACT 2616